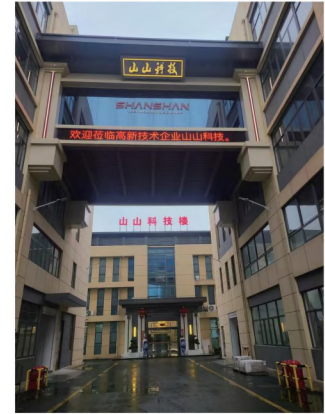


2026



COMPANY PROFILE / 公司简介



山山科技是国家高新技术企业，公司对外承接产品设计，模具制造、成品生产一站式服务。山山深耕锂电池盒产品研发与生产二十八载，现已推出锂电池盒两百余款创新产品，品质卓越，产品远销日本、欧美等多个国家和地区。

山山以独家创新原料配方为基石，打造出高韧性、抗开裂、经久耐用的优质产品。产品严苛测试：在-20℃低温环境冷冻2小时后，产品内部加载3.8千克载荷，1米高度自由坠落，通体完好无开裂，性能稳定可靠。

山山科技持续优化产品结构，实现高标准防水性能，严密阻隔雨水渗入，有效杜绝因进水导致电路短路引发的安全隐患，山山全系列产品防水等级均达IP6级以上，防水性能稳定可靠。

凭借山山过硬的品质，产品可稳定使用5-8年，始终能保持出色的冲击强度。公司严格实行“三包”服务，为用户全程保驾护航。

山山热忱欢迎各界客商莅临指导，共鉴山山品质，携手合作，共赢未来！

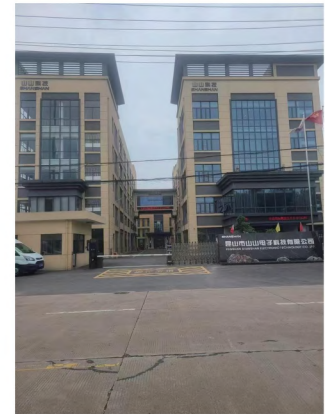
Shanshan Technology is a National High-Tech Enterprise offering comprehensive one-stop services in product design, mould manufacturing and finished product production. With 28 years of dedicated expertise in the research, development and production of lithium battery cases, Shanshan has launched over 200 innovative models of exceptional quality, which are exported to numerous countries and regions including Japan, Europe and the Americas.

Building upon its proprietary innovative raw material formula, Shanshan has created high-quality products characterised by high toughness, crack resistance and long-lasting durability. The products undergo rigorous testing: after being frozen for two hours in a -20°C environment, a 3.8-kilogram load is applied to the interior of the product, which is then dropped from a height of one metre; the product remains intact with no cracks, demonstrating stable and reliable performance.

Shanshan Technology continuously optimises product structural design to achieve high-standard waterproofing performance, effectively preventing rainwater ingress and eliminating safety hazards caused by water ingress leading to electrical short circuits. The entire Shanshan product range meets IPX6 waterproofing standards or higher, ensuring stable and reliable water resistance.

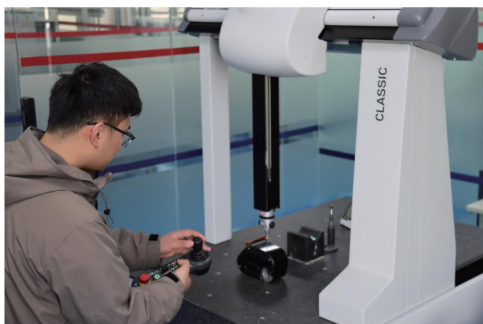
Thanks to Shanshan's superior quality, the products can be used reliably for 5-8 years whilst maintaining excellent impact resistance. The company strictly implements a 'three guarantees' service policy, providing comprehensive support to users throughout the product's lifecycle.

Shanshan warmly welcomes customers from all sectors to visit and provide guidance, to witness Shanshan's quality first-hand, and to join hands in cooperation for a mutually beneficial future!



PATENTED PRODUCTS OF SHANSHAN / 山山科技专利产品
PATENT NO. / 专利号 201720435143.4 201830161103.5

DETECTION / 产品品质检测程序



三次元检测
Coordinate measuring detection.



成品防水检测
To detect waterproof performance of end product.



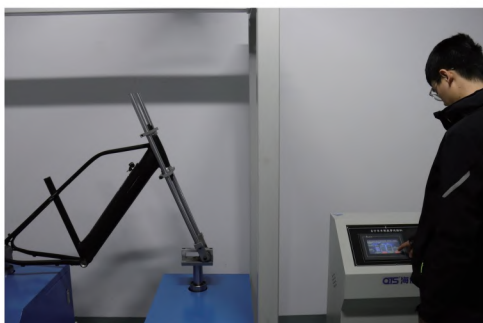
成品气密性测试
To do Air tightness test of end product.



成品强度、拉力检测
To detect intensity strength and pull of end product.



采购原料检测
To detect raw material of product.



振动测试
Vibration testing.



成品高低温检测
To detect extremely cold and high temperature of end product.

CONTENT / 目录

2024 NEW PRODUCTS / 2024新品 **01-07**

DOWN TUBE BATTERY CASE / 下管式电池盒 **07-24**

INNER BATTERY CASE / 内管式电池盒 **24-45**

FOLDING BIKE BATTERY CASE / 折叠车电池盒 **45-48**

CARRIER TYPE BATTERY CASE / 货架式电池盒 **48-56**

MIDDLE TUBE BATTERY CASE / 中管式电池盒 **57-64**

SEAT POST BATTERY CASE / 座杆式电池盒 **64-66**

OTHER / 其它 **66**

BIKE PLASTIC PARTS / 塑胶配件 **67-68**

***产品尺寸图，详细图纸请跟业务人员索取**

***The product dimensions, for detailed drawing please contact our sales.**

EN50604

26
NEW



与老款海龙系列固定座部分通用，可互换。
It is compatible with the old Hailong series base board and can be interchanged.

⚡ 18650 52pcs
/ 21700 30pcs

PATENT NO. / 专利号201530392855.9 PATENT NO. / 专利号201510666772.3

SSE-251 103HAILONG1 / 103海龙1号

Configuration 配置	Capacity 容量		
	2600mAh	2900mAh	3500mAh
10S5P	36V 13.0Ah	36V 14.5Ah	36V 17.5Ah
13S4P	48V 10.4Ah	48V 11.6Ah	48V 14.0Ah
	3500mAh	5000mAh	
10S3P	36V 10.5Ah	36V 15.0Ah	
13S2P	48V 7.0Ah	48V 10.0Ah	
Switch 开关	W/O 无		
IP Level 防水等级	IPX6		
Lock 锁	SPRING LOCK OR MECHANICAL LOCK 弹簧锁或机械锁		

EN50604

26
NEW



与老款海龙系列固定座部分通用，可互换。
It is compatible with the old Hailong series base board and can be interchanged.

⚡ 18650 65pcs
/ 21700 30pcs

PATENT NO. / 专利号201530392855.9 PATENT NO. / 专利号201510666772.3

SSE-252 103HAILONG1-2 / 海龙1号2型

Configuration 配置	Capacity 容量		
	2600mAh	2900mAh	3500mAh
10S6P	36V 15.6Ah	36V 17.4Ah	36V 21.0Ah
13S5P	48V 13.0Ah	48V 14.5Ah	48V 17.5Ah
	3500mAh	5000mAh	
10S3P	36V 10.5Ah	36V 15.0Ah	
13S2P	48V 7.0Ah	48V 10.0Ah	
Switch 开关	WITH 有		
IP Level 防水等级	IPX6		
Lock 锁	SPRING LOCK OR MECHANICAL LOCK 弹簧锁或机械锁		

EN50604

26
NEW



与老款海龙系列固定座部分通用，可互换。
It is compatible with the old Hailong series base board and can be interchanged.

⚡ 18650 52pcs
/ 21700 30pcs

PATENT NO. / 专利号201530392855.9 PATENT NO. / 专利号201510666772.3

SSE-253 103HAILONG PRO / 103海龙PRO

Configuration 配置	Capacity 容量		
	2600mAh	2900mAh	3500mAh
10S5P	36V 13.0Ah	36V 14.5Ah	36V 17.5Ah
13S4P	48V 10.4Ah	48V 11.6Ah	48V 14.0Ah
	3500mAh	5000mAh	
10S3P	36V 10.5Ah	36V 15.0Ah	
13S2P	48V 7.0Ah	48V 10.0Ah	
Switch 开关	W/O 无		
IP Level 防水等级	IPX6		
Lock 锁	SPRING LOCK OR MECHANICAL LOCK 弹簧锁或机械锁		

EN50604

25
NEW



与老款海龙系列固定座部分通用，可互换。
It is compatible with the old Hailong series base board and can be interchanged.

18650 65pcs
/ 21700 52pcs

PATENT NO. / 专利号201530392855.9 PATENT NO. / 专利号201510666772.3

SSE-257 103HAILONG PLUS / 103海龙PLUS

Configuration 配置	Capacity 容量		
	2600mAh	2900mAh	3500mAh
10S6P	36V 15.6Ah	36V 17.4Ah	36V 21.0Ah
13S5P	48V 13.0Ah	48V 14.5Ah	48V 17.5Ah
	3500mAh	5000mAh	
10S5P	36V 17.5Ah	36V 25.0Ah	
13S4P	48V 14.0Ah	48V 20.0Ah	
Switch 开关	W/O 无		
IP Level 防水等级	IPX6		
Lock 锁	SPRING LOCK OR MECHANICAL LOCK 弹簧锁或机械锁		

EN50604

25
NEW



与老款海龙系列固定座部分通用，可互换。
It is compatible with the old Hailong series base board and can be interchanged.

18650 56pcs

PATENT NO. / 专利号201530392855.9 PATENT NO. / 专利号201510666772.3

SSE-254 103HAILONG G56 / 103海龙G56

Configuration 配置	Capacity 容量		
	2600mAh	2900mAh	3500mAh
10S5P	36V 13.0Ah	36V 14.5Ah	36V 17.5Ah
13S4P	48V 10.4Ah	48V 11.6Ah	48V 14.0Ah
14S4P	52V 10.4Ah	52V 11.6Ah	52V 14.0Ah
	3500mAh	5000mAh	
10S3P	36V 10.5Ah	36V 15.0Ah	
13S2P	48V 5.2Ah	48V 7.0Ah	
Switch 开关	W/O 无		
IP Level 防水等级	IPX6		
Lock 锁	SPRING LOCK OR MECHANICAL LOCK 弹簧锁或机械锁		

EN50604

25
NEW



与老款海龙系列固定座部分通用，可互换。
It is compatible with the old Hailong series base board and can be interchanged.

18650 70pcs
/ 21700 52pcs

PATENT NO. / 专利号201530392855.9 PATENT NO. / 专利号201510666772.3

SSE-255 103HAILONG G70 / 103海龙G70

Configuration 配置	Capacity 容量		
	2600mAh	2900mAh	3500mAh
10S7P	36V 18.2Ah	36V 20.3Ah	36V 24.5Ah
13S5P	48V 13.0Ah	48V 14.5Ah	48V 17.5Ah
14S5P	52V 13.0Ah	52V 14.5Ah	52V 17.5Ah
	3500mAh	5000mAh	
10S5P	36V 17.5Ah	36V 25.0Ah	
13S4P	48V 14.0Ah	48V 20.0Ah	
Switch 开关	W/O 无		
IP Level 防水等级	IPX6		
Lock 锁	SPRING LOCK OR MECHANICAL LOCK 弹簧锁或机械锁		

EN50604

25
NEW



与老款海龙系列固定座部分通用，可互换。
It is compatible with the old Hailong series base board and can be interchanged.

⚡ 18650 80pcs
/ 21700 52pcs

PATENT NO. / 专利号201530392855.9 PATENT NO. / 专利号201510666772.3

SSE-256 103HAILONG G80 / 103海龙G80

Configuration 配置	Capacity 容量		
	2600mAh	2900mAh	3500mAh
10S8P	36V 20.8Ah	36V 23.2Ah	36V 28.0Ah
13S6P	48V 15.6Ah	48V 17.4Ah	48V 21.0Ah
	3500mAh	5000mAh	
10S5P	36V 17.5Ah	36V 25.0Ah	
13S4P	48V 14.0Ah	48V 20.0Ah	
Switch 开关	WITH 有		
IP Level 防水等级	IPX6		
Lock 锁	SPRING LOCK OR MECHANICAL LOCK 弹簧锁或机械锁		

EN50604

25
NEW



⚡ 18650 40pcs

PATENT NO. / 专利号2025307368263

SSE-243 101DONGCHE I / 101动车1号

Configuration 配置	Capacity 容量		
	2600mAh	2900mAh	3500mAh
10S4P	36V 10.4Ah	36V 11.6Ah	36V 14.0Ah
13S3P	48V 7.8Ah	48V 8.7Ah	48V 10.5Ah
Switch 开关	W/O 无		
IP Level 防水等级	IPX6		
Lock 锁	SPRING LOCK 弹簧锁		

EN50604

25
NEW



⚡ 18650 40pcs

PATENT NO. / 专利号2025307368263

SSE-250 101DONGCHE II / 101动车2号

Configuration 配置	Capacity 容量		
	2600mAh	2900mAh	3500mAh
10S4P	36V 10.4Ah	36V 11.6Ah	36V 14.0Ah
13S3P	48V 7.8Ah	48V 8.7Ah	48V 10.5Ah
Switch 开关	W/O 无		
IP Level 防水等级	IPX6		
Lock 锁	SPRING LOCK 弹簧锁		

EN50604

26
NEW



21700 20pcs

PATENT NO. / 专利号202530574332X

SEE-182 108SHENLOONG I / 108神龙1号

Configuration 配置	Capacity 容量	
10S2P	3500mAh 36V 7.0Ah	5000mAh 36V 10.0Ah
Switch 开关	W/O 无	
IP Level 防水等级	IPX6	
Lock 锁	SPRING LOCK 弹簧锁	

EN50604

26
NEW



21700 20pcs

PATENT NO. / 专利号2025307368278

SEE-183 108SHENLOONG II / 108神龙2号

Configuration 配置	Capacity 容量	
10S2P	3500mAh 36V 7.0Ah	5000mAh 36V 10.0Ah
Switch 开关	W/O 无	
IP Level 防水等级	IPX6	
Lock 锁	SPRING LOCK 弹簧锁	

EN50604

26
NEW



18650 30pcs

PATENT NO. / 专利号202330706298.8

SSE-249 GENESI PRO II / 吉尼斯PRO2号

Configuration 配置	Capacity 容量		
10S3P	2600mAh 36V 7.8 Ah	2900mAh 36V 8.7Ah	3500mAh 36V 10.5Ah
13S2P	48V 5.2Ah	48V 5.8Ah	48V 7.0Ah
Switch 开关	W/O 无		
IP Level 防水等级	IPX6		
Lock 锁	W/O 无		

EN50604

26
NEW



EN50604

26
NEW



EN50604

26
NEW



21700 78pcs

PATENT NO. / 专利号20263020187037

SSE-081 CANON PRO I / 佳能PRO1号

Configuration 配置	Capacity 容量	
	3500mAh	5000mAh
10S7P	36V 24.5Ah	36V 35.0Ah
13S6P	48V 21.0Ah	48V 30.0Ah
Switch 开关	W/O 无	
IP Level 防水等级	IPX6	
Lock 锁	SPRING LOCK OR MECHANICAL LOCK 弹簧锁或机械锁	

21700 65pcs

PATENT NO. / 专利号20263020187037

SSE-082 CANON PRO II / 佳能PRO2号

Configuration 配置	Capacity 容量	
	3500mAh	5000mAh
10S6P	36V 21.0Ah	36V 30.0Ah
13S5P	48V 17.5Ah	48V 25.0Ah
Switch 开关	W/O 无	
IP Level 防水等级	IPX6	
Lock 锁	SPRING LOCK OR MECHANICAL LOCK 弹簧锁或机械锁	

18650 40pcs

SSE-138 SHIBO I / 世博1号

Configuration 配置	Capacity 容量		
	2600mAh	2900mAh	3500mAh
10S4P	36V 10.4Ah	36V 11.6Ah	36V 14.0Ah
13S3P	48V 7.8Ah	48V 8.7Ah	48V 10.5Ah
Switch 开关	W/O 无		
IP Level 防水等级	IPX6		
Lock 锁	SPRING LOCK 弹簧锁		

EN50604

26
NEW



EN50604

26
NEW



EN50604

26
NEW



18650 40pcs

SSE-262 SHIBO II / 世博2号

Configration 配置	Capacity 容量		
	2600mAh	2900mAh	3500mAh
10S4P	36V 10.4Ah	36V 11.6Ah	36V 14.0Ah
13S3P	48V 7.8Ah	48V 8.7Ah	48V 10.5Ah
Switch 开关	W/O 无		
IP Level 防水等级	IPX6		
Lock 锁	SPRING LOCK 弹簧锁		

21700 78pcs

SEE-260 BOSHI I / 博士1号

Configration 配置	Capacity 容量		
	2600mAh	2900mAh	3500mAh
10S7P	36V 18.2Ah	36V 20.3Ah	36V 24.5Ah
13S6P	48V 15.6Ah	48V 17.4Ah	48V 21.0Ah
Switch 开关	W/O 无		
IP Level 防水等级	IPX6		
Lock 锁	SPRING LOCK 弹簧锁		

18650 91pcs
/ 21700 70pcs

PATENT NO. / 专利号202130844797.4

SSE-242 103CANON II / 103佳能2号

Configration 配置	Capacity 容量		
	2600mAh	2900mAh	3500mAh
13S7P	48V 18.2Ah	48V 20.3Ah	48V 24.5Ah
	3500mAh	5000mAh	
10S7P	36V 24.5Ah	36V 35.0Ah	
13S6P	48V 21.0Ah	48V 30.0Ah	
Switch 开关	W/O 无		
IP Level 防水等级	IPX6		
Lock 锁	MECHANICAL LOCK 机械锁		

EN50604

26
NEW



⚡ 21700 26pcs

SEE-261 SEAGULL I / 海鸥1号

Configuration 配置	Capacity 容量	
	3500mAh	5000mAh
10S2P	36V 7.0Ah	36V 10.0Ah
13S2P	48V 7.0Ah	48V 10.0Ah
Switch 开关	W/O 无	
IP Level 防水等级	IPX6	
Lock 锁	SPRING LOCK 弹簧锁	

EN50604

26
NEW



⚡ 21700 65pcs

SEE-259 JIALOONG I / 佳龙1号 WITH BOTTLE BRACKET产品带水杯架

Configuration 配置	Capacity 容量	
	3500mAh	5000mAh
10S6P	36V 21.0Ah	36V 30.0Ah
13S5P	48V 17.5Ah	48V 25.0Ah
Switch 开关	W/O 无	
IP Level 防水等级	IPX6	
Lock 锁	SPRING LOCK OR MECHANICAL LOCK 弹簧锁或机械锁	



⚡ 18650 20pcs

PATENT NO. / 专利号202330706298.8

SSE-228 GENESI 2 / 吉尼斯二号

Configuration 配置	Capacity 容量		
	2600mAh	2900mAh	3500mAh
10S2P	36V 5.2Ah	36V 5.8Ah	36V 7.0Ah
Switch 开关	W/O 无		
IP Level 防水等级	IPX6		
Lock 锁	W/O 无		



铝合金/ALUMINUM



⚡ 21700 20pcs

PATENT NO. / 专利号202330706298.8

SSE-230 GENESI 3 / 吉尼斯三号

Configuration 配置	Capacity 容量	
10S2P	3500mAh 36V 7.0Ah	5000mAh 36V 10.0Ah
Switch 开关	W/O 无	
IP Level 防水等级	IPX6	
Lock 锁	W/O 无	

⚡ 21700 20pcs

PATENT NO. / 专利号202330706298.8

SSE-244 GENESI PRO I / 吉尼斯PRO一号

Configuration 配置	Capacity 容量	
10S2P	3500mAh 36V 7.0Ah	5000mAh 36V 10.0Ah
Switch 开关	W/O 无	
IP Level 防水等级	IPX6	
Lock 锁	W/O 无	

⚡ 18650 20pcs

PATENT NO. / 专利号202330706298.8

SSE-216 GENESI I / 吉尼斯1号

Configuration 配置	Capacity 容量		
10S2P	2600mAh 36V 5.2Ah	2900mAh 36V 5.8Ah	3500mAh 36V 7.0Ah
Switch 开关	W/O 无		
IP Level 防水等级	IPX6		
Lock 锁	W/O 无		



18650 117pcs
/ 21700 91pcs

PATENT NO. / 专利号202130844797.4

SSE-188 CANON I / 佳能1号

Configuration 配置	Capacity 容量		
13S9P	2600mAh	2900mAh	3500mAh
	48V 23.4Ah	48V 26.1Ah	48V 31.5Ah
10S9P	3500mAh	5000mAh	
	36V 31.5Ah	36V 45.0Ah	
13S7P	48V 24.5Ah	48V 35.0Ah	
Switch 开关	W/O 无		
IP Level 防水等级	W/O 无		
Lock 锁	MECHANICAL LOCK 机械锁		



18650 91pcs
/ 21700 70pcs

PATENT NO. / 专利号202130844797.4

SSE-189 CANON II / 佳能2号

Configuration 配置	Capacity 容量		
13S7P	2600mAh	2900mAh	3500mAh
	48V 18.2Ah	48V 20.3Ah	48V 24.5Ah
10S7P	3500mAh	5000mAh	
	36V 24.5Ah	36V 35.0Ah	
13S6P	48V 21.0Ah	48V 30.0Ah	
Switch 开关	W/O 无		
IP Level 防水等级	W/O 无		
Lock 锁	MECHANICAL LOCK 机械锁		



18650 118pcs
/ 21700 91pcs

PATENT NO. / 专利号202430101172.2

SSE-186 CANON III / 佳能3号

Configuration 配置	Capacity 容量		
10S12P	2600mAh	2900mAh	3500mAh
	36V 31.2Ah	36V 34.8Ah	36V 42.0Ah
13S7P	3500mAh	5000mAh	
	48V 24.5Ah	48V 35.0Ah	
Switch 开关	W/O 无		
IP Level 防水等级	IPX6		
Lock 锁	SPRING LOCK 弹簧锁		



⚡ 18650 52pcs

PATENT NO. / 专利号202430159457.1

SSE-218 AULONG I / 奥龙1号

Configuration 配置	Capacity 容量		
	2600mAh	2900mAh	3500mAh
10S5P	36V 13.0Ah	36V 14.5Ah	36V 17.5Ah
13S4P	48V 10.4Ah	48V 11.6Ah	48V 14.0Ah
Switch 开关	W/O 无		
IP Level 防水等级	IPX6		
Lock 锁	SPRING LOCK 弹簧锁		

⚡ 18650 65pcs

PATENT NO. / 专利号202430159457.1

SSE-219 AULONG II / 奥龙2号

Configuration 配置	Capacity 容量		
	2600mAh	2900mAh	3500mAh
10S6P	36V 15.6Ah	36V 17.4Ah	36V 21.0Ah
13S5P	48V 13.0Ah	48V 14.5Ah	48V 17.5Ah
Switch 开关	W/O 无		
IP Level 防水等级	IPX6		
Lock 锁	SPRING LOCK 弹簧锁		

⚡ 21700 40pcs

PATENT NO. / 专利号202430159457.1

SSE-220 AULONG III / 奥龙3号

Configuration 配置	Capacity 容量	
	3500mAh	5000mAh
10S4P	36V 14.0Ah	36V 20.0Ah
13S3P	48V 10.5Ah	48V 15.0Ah
Switch 开关	W/O 无	
IP Level 防水等级	IPX6	
Lock 锁	SPRING LOCK 弹簧锁	

↻
SIDE RELEASE / 侧拉



⚡ 21700 52pcs

PATENT NO. / 专利号202430159457.1

SSE-221 AULONG IV / 奥龙4号

Configuration 配置	Capacity 容量	
	3500mAh	5000mAh
10S5P	36V 17.5Ah	36V 25.0Ah
13S4P	48V 14.0Ah	48V 20.0Ah
Switch 开关	W/O 无	
IP Level 防水等级	IPX6	
Lock 锁	SPRING LOCK 弹簧锁	

⚡ 18650 42pcs

PATENT NO. / 专利号202330589246.7

SSE-214 HIWE I / 海威1号

Configuration 配置	Capacity 容量		
	2600mAh	2900mAh	3500mAh
10S4P	36V 10.4Ah	36V 11.6Ah	36V 14.0Ah
13S3P	48V 7.8Ah	48V 8.7Ah	48V 10.5Ah
Switch 开关	W/O 无		
IP Level 防水等级	IPX6		
Lock 锁	SPRING LOCK 弹簧锁		

⚡ 18650 52pcs / 21700 30pcs

PATENT NO. / 专利号202330228350.3

SSE-210 HUIPU 2 / 惠普2号

Configuration 配置	Capacity 容量		
	2600mAh	2900mAh	3500mAh
10S4P	36V 10.4Ah	36V 11.6Ah	36V 14.0Ah
13S3P	48V 7.8Ah	48V 8.7Ah	48V 10.5Ah
	3500mAh	5000mAh	
10S3P	36V 10.5Ah	36V 15.0Ah	
13S2P	48V 7.0Ah	48V 10.0Ah	
Switch 开关	W/O 无		
IP Level 防水等级	IPX6		
Lock 锁	SPRING LOCK 弹簧锁		



⚡ 18650 40pcs

PATENT NO. / 专利号202130421184.X PATENT NO. / 专利号201510666772.3

SSE-152 HAICHUANG G40 / 海创G40

Configuration 配置	Capacity 容量		
	2600mAh	2900mAh	3500mAh
10S4P	36V 10.4Ah	36V 11.6Ah	36V 14.0Ah
13S3P	48V 7.8Ah	48V 8.7Ah	48V 10.5Ah
Switch 开关	W/O 无		
IP Level 防水等级	W/O 无		
Lock 锁	MECHANICAL LOCK 机械锁		

⚡ 18650 40pcs

PATENT NO. / 专利号202130421184.X PATENT NO. / 专利号201510666772.3

SSE-149 HAICHUANG G40C / 海创G40C

Configuration 配置	Capacity 容量		
	2600mAh	2900mAh	3500mAh
10S4P	36V 10.4Ah	36V 11.6Ah	36V 14.0Ah
13S3P	48V 7.8Ah	48V 8.7Ah	48V 10.5Ah
Switch 开关	W/O 无		
IP Level 防水等级	W/O 无		
Lock 锁	MECHANICAL LOCK 机械锁		

⚡ 18650 52pcs

PATENT NO. / 专利号202130421184.X PATENT NO. / 专利号201510666772.3

SSE-150 HAICHUANG G52 / 海创G52

Configuration 配置	Capacity 容量		
	2600mAh	2900mAh	3500mAh
10S5P	36V 13.0Ah	36V 14.5Ah	36V 17.5Ah
13S4P	48V 10.4Ah	48V 11.6Ah	48V 14.0Ah
Switch 开关	W/O 无		
IP Level 防水等级	W/O 无		
Lock 锁	MECHANICAL LOCK 机械锁		



⚡ 18650 52pcs

PATENT NO. / 专利号202130421184.X PATENT NO. / 专利号201510666772.3

SSE-147 HAICHUANG G52C / 海创G52C

Configuration 配置	Capacity 容量		
	2600mAh	2900mAh	3500mAh
10S5P	36V 13.0Ah	36V 14.5Ah	36V 17.5Ah
13S4P	48V 10.4Ah	48V 11.6Ah	48V 14.0Ah
Switch 开关	W/O 无		
IP Level 防水等级	W/O 无		
Lock 锁	MECHANICAL LOCK 机械锁		

⚡ 18650 65pcs

PATENT NO. / 专利号202130421184.X PATENT NO. / 专利号201510666772.3

SSE-151 HAICHUANG G65 / 海创G65

Configuration 配置	Capacity 容量		
	2600mAh	2900mAh	3500mAh
10S6P	36V 15.6Ah	36V 17.4Ah	36V 21.0Ah
13S5P	48V 13.0Ah	48V 14.5Ah	48V 17.5Ah
Switch 开关	W/O 无		
IP Level 防水等级	W/O 无		
Lock 锁	MECHANICAL LOCK 机械锁		

⚡ 18650 65pcs

PATENT NO. / 专利号202130421184.X PATENT NO. / 专利号201510666772.3

SSE-148 HAICHUANG G65C / 海创G65C

Configuration 配置	Capacity 容量		
	2600mAh	2900mAh	3500mAh
10S6P	36V 15.6Ah	36V 17.4Ah	36V 21.0Ah
13S5P	48V 13.0Ah	48V 14.5Ah	48V 17.5Ah
Switch 开关	W/O 无		
IP Level 防水等级	W/O 无		
Lock 锁	MECHANICAL LOCK 机械锁		



⚡ 21700 40pcs

PATENT NO. / 专利号202130421184.X PATENT NO. / 专利号201510666772.3

SSE-155 HAICHUANG 21G40 / 海创21G40

Configuration 配置	Capacity 容量	
	3500mAh	5000mAh
10S4P	36V 14.0Ah	36V 20.0Ah
13S3P	48V 10.5Ah	48V 15.0Ah
Switch 开关	W/O 无	
IP Level 防水等级	W/O 无	
Lock 锁	MECHANICAL LOCK 机械锁	

⚡ 21700 40pcs

PATENT NO. / 专利号202130421184.X PATENT NO. / 专利号201510666772.3

SSE-153 HAICHUANG 21G40C / 海创21G40C

Configuration 配置	Capacity 容量	
	3500mAh	5000mAh
10S4P	36V 14.0Ah	36V 20.0Ah
13S3P	48V 10.5Ah	48V 15.0Ah
Switch 开关	W/O 无	
IP Level 防水等级	W/O 无	
Lock 锁	MECHANICAL LOCK 机械锁	

⚡ 21700 30pcs

PATENT NO. / 专利号202130421184.X PATENT NO. / 专利号201510666772.3

SSE-156 HAICHUANG 21G30 / 海创21G30

Configuration 配置	Capacity 容量	
	3500mAh	5000mAh
10S3P	36V 10.5Ah	36V 15.0Ah
Switch 开关	W/O 无	
IP Level 防水等级	W/O 无	
Lock 锁	MECHANICAL LOCK 机械锁	



⚡ 21700 30pcs

PATENT NO. / 专利号202130421184.X PATENT NO. / 专利号201510666772.3

SSE-154 HAICHUANG 21G30C / 海创21G30C

Configuration 配置	Capacity 容量	
10S3P	3500mAh 36V 10.5Ah	5000mAh 36V 15.0Ah
Switch 开关	W/O 无	
IP Level 防水等级	W/O 无	
Lock 锁	MECHANICAL LOCK 机械锁	

**⚡ 18650 52pcs
/ 21700 30pcs**

PATENT NO. / 专利号201530392855.9 PATENT NO. / 专利号201510666772.3

SSE-046 HAILONG I / 海龙1号

Configuration 配置	Capacity 容量		
10S5P	2600mAh	2900mAh	3500mAh
13S4P	36V 13.0Ah	36V 14.5Ah	36V 17.5Ah
	48V 10.4Ah	48V 11.6Ah	48V 14.0Ah
	3500mAh	5000mAh	
10S3P	36V 10.5Ah	36V 15.0Ah	
13S2P	48V 7.0Ah	48V 10.0Ah	
Switch 开关	W/O 无		
IP Level 防水等级	W/O 无		
Lock 锁	MECHANICAL LOCK 机械锁		

**⚡ 18650 65pcs
/ 21700 30pcs**

PATENT NO. / 专利号201530392855.9 PATENT NO. / 专利号201510666772.3

SSE-077 HAILONG I-2 / 海龙1号2型

Configuration 配置	Capacity 容量		
10S6P	2600mAh	2900mAh	3500mAh
13S5P	36V 15.6Ah	36V 17.4Ah	36V 21.0Ah
	48V 13.0Ah	48V 14.5Ah	48V 17.5Ah
	3500mAh	5000mAh	
10S3P	36V 10.5Ah	36V 15.0Ah	
13S2P	48V 7.0Ah	48V 10.0Ah	
Switch 开关	WITH 有		
IP Level 防水等级	W/O 无		
Lock 锁	MECHANICAL LOCK 机械锁		



 **18650 40pcs**

 **18650 52pcs
/ 21700 30pcs**

 **18650 65pcs
/ 21700 52pcs**

PATENT NO. / 专利号201530392855.9 PATENT NO. / 专利号201510666772.3

PATENT NO. / 专利号201530392855.9 PATENT NO. / 专利号201510666772.3

SSE-074 HAILONG II / 海龙2号

Configuration 配置	Capacity 容量		
	2600mAh	2900mAh	3500mAh
10S4P	36V 10.4Ah	36V 11.6Ah	36V 14.0Ah
13S3P	48V 7.8Ah	48V 8.7Ah	48V 10.5Ah
Switch 开关	W/O 无		
IP Level 防水等级	W/O 无		
Lock 锁	MECHANICAL LOCK 机械锁		

SSE-087 HAILONG PRO / 海龙PRO

Configuration 配置	Capacity 容量		
	2600mAh	2900mAh	3500mAh
10S5P	36V 13.0Ah	36V 14.5Ah	36V 17.5Ah
13S4P	48V 10.4Ah	48V 11.6Ah	48V 14.0Ah
	3500mAh	5000mAh	
10S3P	36V 10.5Ah	36V 15.0Ah	
13S2P	48V 7.0Ah	48V 10.0Ah	
Switch 开关	W/O 无		
IP Level 防水等级	W/O 无		
Lock 锁	MECHANICAL LOCK 机械锁		

SSE-086 HAILONG PLUS / 海龙PLUS

Configuration 配置	Capacity 容量		
	2600mAh	2900mAh	3500mAh
10S6P	36V 15.6Ah	36V 17.4Ah	36V 21.0Ah
13S5P	48V 13.0Ah	48V 14.5Ah	48V 17.5Ah
	3500mAh	5000mAh	
10S5P	36V 17.5Ah	36V 25.0Ah	
13S4P	48V 14.0Ah	48V 20.0Ah	
Switch 开关	W/O 无		
IP Level 防水等级	W/O 无		
Lock 锁	MECHANICAL LOCK 机械锁		



18650 56pcs
/ 21700 30pcs

PATENT NO. / 专利号201530392855.9 PATENT NO. / 专利号201510666772.3

SSE-113 HAILONG G56 / 海龙G56

Configuration 配置	Capacity 容量		
	2600mAh	2900mAh	3500mAh
10S5P	36V 13.0Ah	36V 14.5Ah	36V 17.5Ah
13S4P	48V 10.4Ah	48V 11.6Ah	48V 14.0Ah
14S4P	52V 10.4Ah	52V 11.6Ah	52V 14.0Ah
	3500mAh	5000mAh	
10S3P	36V 10.5Ah	36V 15.0Ah	
13S2P	48V 5.2Ah	48V 7.0Ah	
Switch 开关	W/O 无		
IP Level 防水等级	W/O 无		
Lock 锁	MECHANICAL LOCK 机械锁		

18650 70pcs
/ 21700 52pcs

PATENT NO. / 专利号201530392855.9 PATENT NO. / 专利号201510666772.3

SSE-114 HAILONG G70 / 海龙G70

Configuration 配置	Capacity 容量		
	2600mAh	2900mAh	3500mAh
10S7P	36V 18.2Ah	36V 20.3Ah	36V 24.5Ah
13S5P	48V 13.0Ah	48V 14.5Ah	48V 17.5Ah
14S5P	52V 13.0Ah	52V 14.5Ah	52V 17.5Ah
	3500mAh	5000mAh	
10S5P	36V 17.5Ah	36V 25.0Ah	
13S4P	48V 14.0Ah	48V 20.0Ah	
Switch 开关	W/O 无		
IP Level 防水等级	W/O 无		
Lock 锁	MECHANICAL LOCK 机械锁		

18650 80pcs
/ 21700 52pcs

PATENT NO. / 专利号201530392855.9 PATENT NO. / 专利号201510666772.3

SSE-112 HAILONG G80 / 海龙G80

Configuration 配置	Capacity 容量		
	2600mAh	2900mAh	3500mAh
10S8P	36V 20.8Ah	36V 23.2Ah	36V 28.0Ah
13S6P	48V 15.6Ah	48V 17.4Ah	48V 21.0Ah
	3500mAh	5000mAh	
10S5P	36V 17.5Ah	36V 25.0Ah	
13S4P	48V 14.0Ah	48V 20.0Ah	
Switch 开关	WITH 有		
IP Level 防水等级	W/O 无		
Lock 锁	MECHANICAL LOCK 机械锁		



18650 52pcs
/ 21700 30pcs

PATENT NO. / 专利号202130431026.2

SSE-180 SEA MOON / 海月

Configuration 配置	Capacity 容量		
	2600mAh	2900mAh	3500mAh
10S5P	36V 13.0Ah	36V 14.5Ah	36V 17.5Ah
13S4P	48V 10.4Ah	48V 11.6Ah	48V 14.0Ah
	3500mAh	5000mAh	
10S3P	36V 10.5Ah	36V 15.0Ah	
Switch 开关	WITH 有		
IP Level 防水等级	W/O 无		
Lock 锁	SPRING LOCK 弹簧锁		

18650 52pcs
/ 21700 30pcs

PATENT NO. / 专利号202130431026.2

SSE-181 SEA MOON-C / 海月-C

Configuration 配置	Capacity 容量		
	2600mAh	2900mAh	3500mAh
10S5P	36V 13.0Ah	36V 14.5Ah	36V 17.5Ah
13S4P	48V 10.4Ah	48V 11.6Ah	48V 14.0Ah
	3500mAh	5000mAh	
10S3P	36V 10.5Ah	36V 15.0Ah	
Switch 开关	WITH 有		
IP Level 防水等级	W/O 无		
Lock 锁	SPRING LOCK 弹簧锁		

18650 52pcs
/ 21700 30pcs

PATENT NO. / 专利号202130431026.2

SSE-110 SEA MOON-F / 海月-F

Configuration 配置	Capacity 容量		
	2600mAh	2900mAh	3500mAh
10S5P	36V 13.0Ah	36V 14.5Ah	36V 17.5Ah
13S4P	48V 10.4Ah	48V 11.6Ah	48V 14.0Ah
	3500mAh	5000mAh	
10S3P	36V 10.5Ah	36V 15.0Ah	
Switch 开关	WITH 有		
IP Level 防水等级	W/O 无		
Lock 锁	SPRING LOCK 弹簧锁		



18650 40pcs
/ 21700 20pcs

PATENT NO. / 专利号202130431026.2

SSE-133 SEA MOON PRO / 海月PRO

Configuration 配置	Capacity 容量		
	2600mAh	2900mAh	3500mAh
10S4P	36V 10.4Ah	36V 11.6Ah	36V 14.0Ah
13S3P	48V 7.8Ah	48V 8.7Ah	48V 10.5Ah
	3500mAh	5000mAh	
10S2P	36V 7.0Ah	36V 10.0Ah	
Switch 开关	WITH 有		
IP Level 防水等级	W/O 无		
Lock 锁	SPRING LOCK 弹簧锁		

18650 52pcs
/ 21700 42pcs

SSE-107 XIAPU I / 夏普1号

Configuration 配置	Capacity 容量		
	2600mAh	2900mAh	3500mAh
10S5P	36V 13.0Ah	36V 14.5Ah	36V 17.5Ah
13S4P	48V 10.4Ah	48V 11.6Ah	48V 14.0Ah
	3500mAh	5000mAh	
10S4P	36V 14.0Ah	36V 20.0Ah	
13S3P	48V 10.5Ah	48V 15.0Ah	
Switch 开关	WITH 有		
IP Level 防水等级	W/O 无		
Lock 锁	MECHANICAL LOCK 机械锁		

18650 14pcs

SSE-131 SHDL I / 水壶动力1号

Configuration 配置	Capacity 容量		
	2600mAh	2900mAh	3500mAh
7S2P	24V 5.2Ah	24V 5.8Ah	24V 7.0Ah
Switch 开关	W/O 无		
IP Level 防水等级	W/O 无		
Lock 锁	MECHANICAL LOCK 机械锁		



⚡ 21700 14pcs



⚡ 18650 52pcs



⚡ 18650 65pcs

SSE-179 SHDL II / 水壶动力2号

Configuration 配置	Capacity 容量	
7S2P	3500mAh	5000mAh
	24V 7.0Ah	24V 10.0Ah
Switch 开关	W/O 无	
IP Level 防水等级	W/O 无	
Lock 锁	MECHANICAL LOCK 机械锁	

SSE-090 NANHAI I / 南海1号

Configuration 配置	Capacity 容量		
10S5P 13S4P	2600mAh	2900mAh	3500mAh
	36V 13.0Ah	36V 14.5Ah	36V 17.5Ah
	48V 10.4Ah	48V 11.6Ah	48V 14.0Ah
Switch 开关	W/O 无		
IP Level 防水等级	W/O 无		
Lock 锁	SPRING LOCK 弹簧锁		

SSE-091 NANHAI II / 南海2号

Configuration 配置	Capacity 容量		
10S6P 13S5P	2600mAh	2900mAh	3500mAh
	36V 15.6Ah	36V 17.4Ah	36V 21.0Ah
	48V 13.0Ah	48V 14.5Ah	48V 17.5Ah
Switch 开关	W/O 无		
IP Level 防水等级	W/O 无		
Lock 锁	SPRING LOCK 弹簧锁		



⚡ 21700 70pcs

PATENT NO. / 专利号202430216263.0

SSE-227 BEINGLEY 1 / 宾利一号

Configuration 配置	Capacity 容量	
	3500mAh	5000mAh
10S7P	36V 24.5Ah	36V 35.0Ah
13S5P	48V 17.5Ah	48V 25.0Ah
Switch 开关	W/O 无	
IP Level 防水等级	IPX4	
Lock 锁	SPRING LOCK 弹簧锁	

⚡ 21700 52pcs

PATENT NO. / 专利号202430216263.0

SSE-231 BEINGLEY 2 / 宾利二号

Configuration 配置	Capacity 容量	
	3500mAh	5000mAh
10S5P	36V 17.5Ah	36V 25.0Ah
13S4P	48V 14.0Ah	48V 20.0Ah
Switch 开关	W/O 无	
IP Level 防水等级	IPX4	
Lock 锁	SPRING LOCK 弹簧锁	

⚡ 18650 40pcs

SSE-001 DONGCHE I / 动车1号

Configuration 配置	Capacity 容量		
	2600mAh	2900mAh	3500mAh
10S4P	36V 10.4Ah	36V 11.6Ah	36V 14.0Ah
13S3P	48V 7.8Ah	48V 8.7Ah	48V 10.5Ah
Switch 开关	WITH 有		
IP Level 防水等级	W/O 无		
Lock 锁	SPRING LOCK 弹簧锁		



SIDE RELEASE / 侧拉



SIDE RELEASE / 侧拉



 18650 40pcs

 18650 40pcs

 18650 40pcs

SSE-002 DONGCHE II / 动车2号

Configuration 配置	Capacity 容量		
	2600mAh	2900mAh	3500mAh
10S4P	36V 10.4Ah	36V 11.6Ah	36V 14.0Ah
13S3P	48V 7.8Ah	48V 8.7Ah	48V 10.5Ah
Switch 开关	WITH 有		
IP Level 防水等级	W/O 无		
Lock 锁	SPRING LOCK 弹簧锁		

SSE-009 HYDC I / 海洋动车1号

Configuration 配置	Capacity 容量		
	2600mAh	2900mAh	3500mAh
10S4P	36V 10.4Ah	36V 11.6Ah	36V 14.0Ah
13S3P	48V 7.8Ah	48V 8.7Ah	48V 10.5Ah
Switch 开关	WITH 有		
IP Level 防水等级	W/O 无		
Lock 锁	MECHANICAL LOCK 机械锁		

SSE-021 HYDC II / 海洋动车2号

Configuration 配置	Capacity 容量		
	2600mAh	2900mAh	3500mAh
10S4P	36V 10.4Ah	36V 11.6Ah	36V 14.0Ah
13S3P	48V 7.8Ah	48V 8.7Ah	48V 10.5Ah
Switch 开关	WITH 有		
IP Level 防水等级	W/O 无		
Lock 锁	MECHANICAL LOCK 机械锁		



⚡ 18650 40pcs

SSE-041 OCEAN I / 海洋1号

Configuration 配置	Capacity 容量		
	2600mAh	2900mAh	3500mAh
10S4P	36V 10.4Ah	36V 11.6Ah	36V 14.0Ah
13S3P	48V 7.8Ah	48V 8.7Ah	48V 10.5Ah
Switch 开关	WITH 有		
IP Level 防水等级	W/O 无		
Lock 锁	MECHANICAL LOCK 机械锁		

⚡ 18650 40pcs

SSE-042 OCEAN II / 海洋2号

Configuration 配置	Capacity 容量		
	2600mAh	2900mAh	3500mAh
10S4P	36V 10.4Ah	36V 11.6Ah	36V 14.0Ah
13S3P	48V 7.8Ah	48V 8.7Ah	48V 10.5Ah
Switch 开关	WITH 有		
IP Level 防水等级	W/O 无		
Lock 锁	MECHANICAL LOCK 机械锁		

⚡ 18650 20/30/40pcs

PATENT NO. / 专利号201720435143.4 PATENT NO. / 专利号201830161103.5

SSE-092/093/094 DONGCHE G20/30/40 / 动车G20/30/40

Configuration 配置	Capacity 容量		
	2600mAh	2900mAh	3500mAh
10S2P	36V 5.2Ah	36V 5.8Ah	36V 7.0Ah
10S3P	36V 7.8Ah	36V 8.7Ah	36V 10.5Ah
10S4P	36V 10.4Ah	36V 11.6Ah	36V 14.0Ah
13S3P	48V 7.8Ah	48V 8.7Ah	48V 10.5Ah
Switch 开关	W/O 无		
IP Level 防水等级	W/O 无		
Lock 锁	MECHANICAL LOCK 机械锁		

EN50604



The tube part is just a conceptual design for reference only, you can design your own style of tube based on it.
/ 车管部分只是一个概念设计，只供参考，你们可以在此基础上设计自己风格的车管。

EN50604



⚡ 18650 30pcs

PATENT NO. / 专利号201720435143.4 PATENT NO. / 专利号201830161103.5

SSE-100 DONGCHE G30 C / 动车G30C

Configuration 配置	Capacity 容量		
10S3P	2600mAh 36V 7.8Ah	2900mAh 36V 8.7Ah	3500mAh 36V 10.5Ah
Switch 开关	W/O 无		
IP Level 防水等级	W/O 无		
Lock 锁	MECHANICAL LOCK 机械锁		

⚡ 21700 30pcs

PATENT NO. / 专利号202530125791X

SSE-235 PHOENIX I / 凤凰1号

Configuration 配置	Capacity 容量	
10S3P	3500mAh 36V 10.5Ah	5000mAh 36V 15.0Ah
13S2P	48V 7.0Ah	48V 10.0Ah
Switch 开关	W/O 无	
IP Level 防水等级	IPX6	
Lock 锁	SPRING LOCK 弹簧锁	

⚡ 21700 42pcs

PATENT NO. / 专利号202530125791X

SSE-236 PHOENIX II / 凤凰2号

Configuration 配置	Capacity 容量	
10S4P	3500mAh 36V 14.0Ah	5000mAh 36V 20.0Ah
13S3P	48V 11.5Ah	48V 15.0Ah
Switch 开关	W/O 无	
IP Level 防水等级	IPX6	
Lock 锁	SPRING LOCK 弹簧锁	

EN50604

The tube part is just a conceptual design for reference only, you can design your own style of tube based on it.
/ 车管部分只是一个概念设计，只供参考，你们可以在此基础上设计自己风格的车管。



21700 30pcs

PATENT NO. / 专利号202530125791X

SSE-237 PHOENIX III / 凤凰3号

Configuration 配置	Capacity 容量	
	3500mAh	5000mAh
10S3P	36V 10.5Ah	36V 15.0Ah
13S2P	48V 7.0Ah	48V 10.0Ah
Switch 开关	W/O 无	
IP Level 防水等级	IPX6	
Lock 锁	SPRING LOCK 弹簧锁	

EN50604



21700 42pcs

PATENT NO. / 专利号2025301257924

SSE-238 PHOENIX IV / 凤凰4号

Configuration 配置	Capacity 容量	
	3500mAh	5000mAh
10S4P	36V 14.0Ah	36V 20.0Ah
13S3P	48V 11.5Ah	48V 15.0Ah
Switch 开关	W/O 无	
IP Level 防水等级	IPX6	
Lock 锁	SPRING LOCK 弹簧锁	



21700 78pcs

PATENT NO. / 专利号202430216267.9

SSE-226 HUANGSHAN 1 / 黄山1号

Configuration 配置	Capacity 容量	
	3500mAh	5000mAh
10S7P	36V 24.5Ah	36V 35.0Ah
13S6P	48V 21.0Ah	48V 30.0Ah
Switch 开关	W/O 无	
IP Level 防水等级	IPX6	
Lock 锁	MECHANICAL LOCK / 机械锁	

EN50604



⚡ 21700 78pcs

PATENT NO. / 专利号202430115295.1

SSE-233 HUANG SHAN II/黄山二号 内销款

Configuration 配置	Capacity 容量	
	3500mAh	5000mAh
10S7P	36V 24.5Ah	36V 35.0Ah
13S6P	48V 21.0Ah	48V 30.0Ah
Switch 开关	W/O 无	
IP Level 防水等级	IPX6	
Lock 锁	MECHANICAL LOCK 机械锁	



SSE-246 TAIHU I (MEN'S BIKE) / 太湖1号 (男车)
SSE-247 TAIHU II (WOMEN'S BIKE) / 太湖2号 (女车)

⚡ 21700 20pcs

SSE-246 TAIHU I (MEN'S BIKE) / 太湖1号 (男车)

Configuration 配置	Capacity 容量	
	3500mAh	5000mAh
10S2P	36V 7.0Ah	36V 10.0Ah
Switch 开关	W/O 无	
IP Level 防水等级	IPX6	
Lock 锁	SPRING LOCK 弹簧锁	



⚡ 18650 52pcs

PATENT NO. / 专利号2025301257892

SSE-234 SAN YOUNG I / 三洋1号

Configuration 配置	Capacity 容量		
	2600mAh	2900mAh	3500mAh
10S5P	36V 13.0Ah	36V 14.5Ah	36V 17.5Ah
13S4P	48V 10.4Ah	48V 11.6Ah	48V 14.0Ah
Switch 开关	W/O 无		
IP Level 防水等级	IPX6		
Lock 锁	SPRING LOCK 弹簧锁		



⚡ 18650 40pcs

PATENT NO. / 专利号2025301257892

SSE-241 SAN YOUNG II / 三洋2号

Configuration 配置	Capacity 容量		
	2600mAh	2900mAh	3500mAh
10S4P	36V 10.4Ah	36V 11.6Ah	36V 14.0Ah
13S3P	48V 7.8Ah	48V 8.7Ah	48V 10.5Ah
Switch 开关	W/O 无		
IP Level 防水等级	IPX6		
Lock 锁	SPRING LOCK 弹簧锁		



⚡ 21700 56pcs

PATENT NO. / 专利号202330150611.4

SSE-208 HIMARS / 海马斯

Configuration 配置	Capacity 容量	
	3500mAh	3500mAh
10S5P	36V 17.5Ah	36V 25.0Ah
13S4P	48V 14.0Ah	48V 20.0Ah
14S4P	52V 14.0Ah	52V 20.0Ah
Switch 开关	W/O 无	
IP Level 防水等级	IPX6	
Lock 锁	MECHANICAL LOCK 机械锁	



⚡ 18650 52pcs / 21700 30pcs

PATENT NO. / 专利号202330150654.2

SSE-205 BOCHUANG I / 博创1号

Configuration 配置	Capacity 容量		
	2600mAh	2900mAh	3500mAh
10S5P	36V 13.0Ah	36V 14.5Ah	36V 17.5Ah
13S4P	48V 10.4Ah	48V 11.6Ah	48V 14.0Ah
	3500mAh	5000mAh	
10S3P	36V 10.5Ah	36V 15.0Ah	
Switch 开关	W/O 无		
IP Level 防水等级	IPX6		
Lock 锁	SPRING LOCK 弹簧锁		



18650 65pcs
/ 21700 42pcs

PATENT NO. / 专利号202330150654.2

SSE-206 BOCHUANG II / 博创2号

Configuration 配置	Capacity 容量		
	2600mAh	2900mAh	3500mAh
10S6P	36V 15.6Ah	36V 17.4Ah	36V 21.0Ah
13S5P	48V 13.0Ah	48V 14.5Ah	48V 17.5Ah
	3500mAh	5000mAh	
10S4P	36V 14.0Ah	36V 20.0Ah	
13S3P	48V 10.5Ah	48V 15.0Ah	
14S3P	52V 10.5Ah	52V 15.0Ah	
Switch 开关	W/O 无		
IP Level 防水等级	IPX6		
Lock 锁	SPRING LOCK 弹簧锁		

18650 80pcs
/ 21700 56pcs

PATENT NO. / 专利号202330150654.2

SSE-207 BOCHUANG III / 博创3号

Configuration 配置	Capacity 容量		
	2600mAh	2900mAh	3500mAh
10S8P	36V 20.8Ah	36V 23.2Ah	36V 28.0Ah
13S6P	48V 15.6Ah	48V 17.4Ah	48V 21.0Ah
	3500mAh	5000mAh	
10S5P	36V 17.5Ah	36V 25.0Ah	
13S4P	48V 14.0Ah	48V 20.0Ah	
14S4P	52V 14.0Ah	52V 20.0Ah	
Switch 开关	W/O 无		
IP Level 防水等级	IPX6		
Lock 锁	SPRING LOCK 弹簧锁		

18650 65pcs
/ 21700 42pcs

PATENT NO. / 专利号202330150615.2

SSE-209 HUIPU I / 惠普1号

Configuration 配置	Capacity 容量		
	2600mAh	2900mAh	3500mAh
10S4P	36V 10.4Ah	36V 11.6Ah	36V 14.0Ah
13S3P	48V 7.8Ah	48V 8.7Ah	48V 10.5Ah
	3500mAh	5000mAh	
10S4P	36V 14.0Ah	36V 20.0Ah	
13S3P	48V 10.5Ah	48V 15.0Ah	
14S4P	52V 14.0Ah	52V 20.0Ah	
Switch 开关	W/O 无		
IP Level 防水等级	IPX6		
Lock 锁	SPRING LOCK 弹簧锁		



⚡ 18650 40pcs

PATENT NO. / 专利号202230405987.0

SSE-192 V LOONG II / 威龙2号

Configuration 配置	Capacity 容量		
	2600mAh	2900mAh	3500mAh
10S4P	36V 10.4Ah	36V 11.6Ah	36V 14.0Ah
13S3P	48V 7.8Ah	48V 8.7Ah	48V 10.5Ah
Switch 开关	W/O 无		
IP Level 防水等级	IPX4		
Lock 锁	SPRING LOCK 弹簧锁		

⚡ 18650 50pcs / 21700 40pcs

SSE-122 LOONG I / 长龙1号

Configuration 配置	Capacity 容量		
	2600mAh	2900mAh	3500mAh
10S5P	36V 13.0Ah	36V 14.5Ah	36V 17.5Ah
	3500mAh	5000mAh	
10S4P	36V 14.0Ah	36V 20.0Ah	
13S3P	48V 10.5Ah	48V 15.0Ah	
Switch 开关	W/O 无		
IP Level 防水等级	IPX4		
Lock 锁	SPRING LOCK 弹簧锁		

⚡ 18650 50pcs / 21700 40pcs

PATENT NO. / 专利号202130421184.X PATENT NO. / 专利号201510666772.3

SSE-190 LOONG II / 长龙2号

Configuration 配置	Capacity 容量		
	2600mAh	2900mAh	3500mAh
10S5P	36V 13.0Ah	36V 14.5Ah	36V 17.5Ah
	3500mAh	5000mAh	
10S4P	36V 14.0Ah	36V 20.0Ah	
13S3P	48V 10.5Ah	48V 15.0Ah	
Switch 开关	W/O 无		
IP Level 防水等级	IPX4		
Lock 锁	MECHANICAL LOCK+SAFETY LOCK 机械锁+安全锁		



 **18650 50pcs*2**
/ 21700 40pcs*2

 **18650 50pcs*2**
/ 21700 40pcs*2

 **18650 30pcs**
/ 21700 20pcs

PATENT NO. / 专利号202230149996.8

SSE-118 DUAL LOONG I / 双龙1号

Configuration 配置	Capacity 容量		
10S5P	2600mAh 36V 13.0Ah	2900mAh 36V 14.5Ah	3500mAh 36V 17.5Ah
10S4P	3500mAh 36V 14.0Ah	5000mAh 36V 20.0Ah	
13S3P	48V 10.5Ah	48V 15.0Ah	
Switch 开关	W/O 无		
IP Level 防水等级	IPX4		
Lock 锁	MECHANICAL LOCK+SAFETY LOCK 机械锁+安全锁		

SSE-187 DUAL LOONG II / 双龙2号

Configuration 配置	Capacity 容量		
10S5P	2600mAh 36V 13.0Ah	2900mAh 36V 14.5Ah	3500mAh 36V 17.5Ah
10S4P	3500mAh 36V 14.0Ah	5000mAh 36V 20.0Ah	
13S3P	48V 10.5Ah	48V 15.0Ah	
Switch 开关	W/O 无		
IP Level 防水等级	IPX4		
Lock 锁	MECHANICAL LOCK+SAFETY LOCK 机械锁+安全锁		

SSE-116 HUGE LOONG I / 巨龙1号

Configuration 配置	Capacity 容量		
10S3P	2600mAh 36V 7.8Ah	2900mAh 36V 8.7Ah	3500mAh 36V 10.5Ah
10S2P	3500mAh 36V 7.0Ah	5000mAh 36V 10.0Ah	
13S2P	48V 7.0Ah	48V 10.0Ah	
Switch 开关	W/O 无		
IP Level 防水等级	IPX4		
Lock 锁	W/O 无		



 **21700 20pcs**

SSE-136 HUGE LOONG II PRO / 巨龙2号PRO

Configuration 配置	Capacity 容量	
10S2P	3500mAh 36V 7.0Ah	5000mAh 36V 10.0Ah
Switch 开关	W/O 无	
IP Level 防水等级	IPX4	
Lock 锁	W/O 无	



 **18650 30pcs
/ 21700 20pcs**

SSE-143 HUGE LOONG III / 巨龙3号

Configuration 配置	Capacity 容量		
13S3P	2600mAh 48V 7.8Ah	2900mAh 48V 8.7Ah	3500mAh 48V 10.5Ah
10S2P	3500mAh 36V 7.0Ah	5000mAh 48V 10.0Ah	
Switch 开关	W/O 无		
IP Level 防水等级	IPX4		
Lock 锁	W/O 无		



 **21700 20pcs**

SSE-215 HUGE LOONG IV / 巨龙4号

Configuration 配置	Capacity 容量	
10S2P	3500mAh 36V 7.0Ah	5000mAh 36V 10.0Ah
Switch 开关	W/O 无	
IP Level 防水等级	IPX4	
Lock 锁	MECHANICAL LOCK 机械锁	

EN50604



 21700 20pcs

 18650 52pcs

 18650 40pcs

SSE-142 HUGE LOONG V / 巨龙5号

Configuration 配置	Capacity 容量	
10S2P	3500mAh	5000mAh
	36V 7.0Ah	36V 10.0Ah
Switch 开关	W/O 无	
IP Level 防水等级	IPX4	
Lock 锁	W/O 无	

SSE-157 SUONITE I-G52T / 索尼特1号上拉G52T

Configuration 配置	Capacity 容量		
10S5P	2600mAh	2900mAh	3500mAh
	36V 13.0Ah	36V 14.5Ah	36V 17.5Ah
	48V 10.4Ah	48V 11.6Ah	48V 14.0Ah
13S4P	48V 10.4Ah	48V 11.6Ah	48V 14.0Ah
Switch 开关	W/O 无		
IP Level 防水等级	IPX4		
Lock 锁	MECHANICAL LOCK 机械锁		

SSE-158 SUONITE II-G40T / 索尼特2号上拉G40T

Configuration 配置	Capacity 容量		
10S4P	2600mAh	2900mAh	3500mAh
	36V 10.4Ah	36V 11.6Ah	36V 14.0Ah
	48V 7.8Ah	48V 8.7Ah	48V 10.5Ah
13S3P	48V 7.8Ah	48V 8.7Ah	48V 10.5Ah
Switch 开关	W/O 无		
IP Level 防水等级	IPX4		
Lock 锁	MECHANICAL LOCK 机械锁		



 **18650 52pcs**

SSE-159 SUONITE III-G52B / 索尼特3号下拉G52B

Configuration 配置	Capacity 容量		
	2600mAh	2900mAh	3500mAh
10S5P	36V 13.0Ah	36V 14.5Ah	36V 17.5Ah
13S4P	48V 10.4Ah	48V 11.6Ah	48V 14.0Ah
Switch 开关	W/O 无		
IP Level 防水等级	IPX4		
Lock 锁	MECHANICAL LOCK 机械锁		

 **18650 52pcs**

SSE-160 SUONITE IV-G40B / 索尼特4号下拉G40B

Configuration 配置	Capacity 容量		
	2600mAh	2900mAh	3500mAh
10S5P	36V 13.0Ah	36V 14.5Ah	36V 17.5Ah
13S4P	48V 10.4Ah	48V 11.6Ah	48V 14.0Ah
Switch 开关	W/O 无		
IP Level 防水等级	IPX4		
Lock 锁	MECHANICAL LOCK 机械锁		

 **18650 52pcs**

SSE-161 SUONITE G52 / 索尼特直管G52

Configuration 配置	Capacity 容量		
	2600mAh	2900mAh	3500mAh
10S5P	36V 13.0Ah	36V 14.5Ah	36V 17.5Ah
13S4P	48V 10.4Ah	48V 11.6Ah	48V 14.0Ah
Switch 开关	W/O 无		
IP Level 防水等级	IPX4		
Lock 锁	MECHANICAL LOCK 机械锁		



⚡ 18650 40pcs

⚡ 21700 52pcs

⚡ 21700 40pcs

SSE-162 SUONITE G40 / 索尼特直管G40

Configuration 配置	Capacity 容量		
	2600mAh	2900mAh	3500mAh
10S4P	36V 10.4Ah	36V 11.6Ah	36V 14.0Ah
13S3P	48V 7.8Ah	48V 8.7Ah	48V 10.5Ah
Switch 开关	W/O 无		
IP Level 防水等级	IPX4		
Lock 锁	MECHANICAL LOCK 机械锁		

SSE-169 SUONITE 21G52T / 索尼特21G52T

Configuration 配置	Capacity 容量	
	3500mAh	3500mAh
10S5P	36V 17.5Ah	36V 25.0Ah
13S4P	48V 14.0Ah	48V 20.0Ah
Switch 开关	W/O 无	
IP Level 防水等级	IPX4	
Lock 锁	MECHANICAL LOCK 机械锁	

SSE-170 SUONITE 21G40T / 索尼特21G40T

Configuration 配置	Capacity 容量	
	3500mAh	3500mAh
10S4P	36V 14.0Ah	36V 20.0Ah
13S3P	48V 10.5Ah	48V 15.0Ah
Switch 开关	W/O 无	
IP Level 防水等级	IPX4	
Lock 锁	MECHANICAL LOCK 机械锁	



⚡ 21700 52pcs

SSE-171 SUONITE 21G52B / 索尼特21G52B

Configuration 配置	Capacity 容量	
	3500mAh	3500mAh
10S5P	36V 17.5Ah	36V 25.0Ah
13S4P	48V 14.0Ah	48V 20.0Ah
Switch 开关	W/O 无	
IP Level 防水等级	IPX4	
Lock 锁	MECHANICAL LOCK 机械锁	

⚡ 21700 40pcs

SSE-172 SUONITE 21G40B / 索尼特21G40B

Configuration 配置	Capacity 容量	
	3500mAh	3500mAh
10S4P	36V 14.0Ah	36V 20.0Ah
13S3P	48V 10.5Ah	48V 15.0Ah
Switch 开关	W/O 无	
IP Level 防水等级	IPX4	
Lock 锁	MECHANICAL LOCK 机械锁	

⚡ 21700 52pcs

SSE-173 SUONITE 21G52 / 索尼特21G52

Configuration 配置	Capacity 容量	
	3500mAh	3500mAh
10S5P	36V 17.5Ah	36V 25.0Ah
13S4P	48V 14.0Ah	48V 20.0Ah
Switch 开关	W/O 无	
IP Level 防水等级	IPX4	
Lock 锁	MECHANICAL LOCK 机械锁	



⚡ 21700 40pcs

⚡ 21700 52pcs

⚡ 21700 40pcs

SSE-174 SUONITE 21G40 / 索尼特21G40

Configuration 配置	Capacity 容量	
	3500mAh	3500mAh
10S4P	36V 14.0Ah	36V 20.0Ah
13S3P	48V 10.5Ah	48V 15.0Ah
Switch 开关	W/O 无	
IP Level 防水等级	IPX4	
Lock 锁	MECHANICAL LOCK 机械锁	

SSE-175 SUONITE 21G520 / 索尼特21G52打扁

Configuration 配置	Capacity 容量	
	3500mAh	3500mAh
10S5P	36V 17.5Ah	36V 25.0Ah
13S4P	48V 14.0Ah	48V 20.0Ah
Switch 开关	W/O 无	
IP Level 防水等级	IPX4	
Lock 锁	MECHANICAL LOCK 机械锁	

SSE-176 SUONITE 21G400 / 索尼特21G40打扁

Configuration 配置	Capacity 容量	
	3500mAh	3500mAh
10S4P	36V 14.0Ah	36V 20.0Ah
13S3P	48V 10.5Ah	48V 15.0Ah
Switch 开关	W/O 无	
IP Level 防水等级	IPX4	
Lock 锁	MECHANICAL LOCK 机械锁	



SIDE RELEASE / 侧拉

WITHOUT HANDLE / 不带手柄



WITH HANDLE / 带手柄

SIDE RELEASE / 侧拉

WITHOUT HANDLE / 不带手柄



WITH HANDLE / 带手柄

SIDE RELEASE / 侧拉

 **18650 80pcs**
/ 21700 65pcs

SSE-144 RICOH I / 侧拉理光1号

Configuration 配置	Capacity 容量		
	2600mAh	2900mAh	3500mAh
10S8P	36V 20.8Ah	36V 23.2Ah	36V 28.0Ah
13S6P	48V 15.6Ah	48V 17.4Ah	48V 21.0Ah
	3500mAh	5000mAh	
10S6P	36V 21.0Ah	36V 30.0Ah	
13S5P	48V 17.5Ah	48V 25.0Ah	
Switch 开关	W/O 无		
IP Level 防水等级	IPX4		
Lock 锁	MECHANICAL LOCK 机械锁		

 **18650 52pcs**
/ 21700 30pcs

PATENT NO. / 专利号202130776164.4

SSE-145 RICOH II / 侧拉理光2号

Configuration 配置	Capacity 容量		
	2600mAh	2900mAh	3500mAh
10S5P	36V 13.0Ah	36V 14.5Ah	36V 17.5Ah
13S4P	48V 10.4Ah	48V 11.6Ah	48V 14.0Ah
	3500mAh	5000mAh	
10S3P	36V 10.5Ah	36V 15.0Ah	
Switch 开关	W/O 无		
IP Level 防水等级	IPX4		
Lock 锁	MECHANICAL LOCK 机械锁		

 **18650 40pcs**
/ 21700 20pcs

PATENT NO. / 专利号202130401528.0

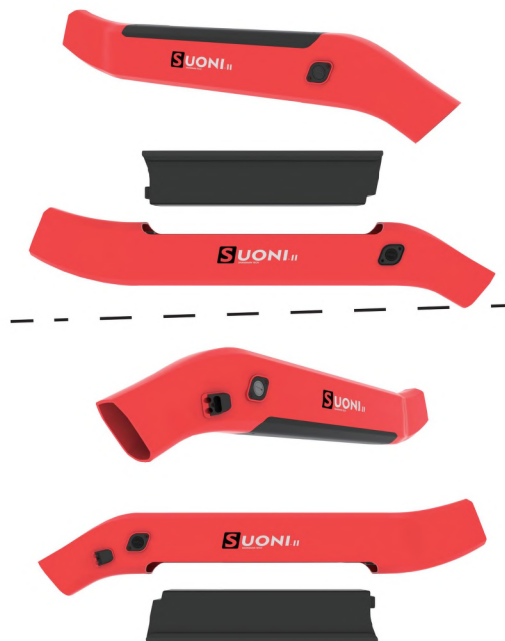
SSE-146 RICOH III / 侧拉理光3号

Configuration 配置	Capacity 容量		
	2600mAh	2900mAh	3500mAh
10S4P	36V 10.4Ah	36V 11.6Ah	36V 14.0Ah
13S3P	48V 7.8Ah	48V 8.7Ah	48V 10.5Ah
	3500mAh	5000mAh	
10S2P	36V 7.0Ah	36V 10.0Ah	
Switch 开关	W/O 无		
IP Level 防水等级	IPX4		
Lock 锁	MECHANICAL LOCK 机械锁		

EN50604



TOP PULL / 上拉



BOTTOM PULL / 下拉

TOP PULL / 上拉



BOTTOM PULL / 下拉

 **18650 65pcs**
/ 21700 40pcs

SSE-103 SUONI I / 索尼1号

Configuration 配置	Capacity 容量		
	2600mAh	2900mAh	3500mAh
10S6P	36V 15.6Ah	36V 17.4Ah	36V 21.0Ah
13S5P	48V 13.0Ah	48V 14.5Ah	48V 17.5Ah
	3500mAh	5000mAh	
10S4P	36V 14.0Ah	36V 20.0Ah	
13S3P	48V 10.5Ah	48V 15.0Ah	
Switch 开关	W/O 无		
IP Level 防水等级	IPX6		
Lock 锁	SPRING LOCK 弹簧锁		

 **18650 60pcs**
/ 21700 40pcs

PATENT NO. / 专利号202021862915.0

SSE-130 SUONI II / 索尼2号

Configuration 配置	Capacity 容量		
	2600mAh	2900mAh	3500mAh
10S6P	36V 15.6Ah	36V 17.4Ah	36V 21.0Ah
	3500mAh	5000mAh	
10S4P	36V 14.0Ah	36V 20.0Ah	
13S3P	48V 10.5Ah	48V 15.0Ah	
Switch 开关	W/O 无		
IP Level 防水等级	IPX6		
Lock 锁	SPRING LOCK 弹簧锁		

 **18650 70pcs**
/ 21700 40pcs

PATENT NO. / 专利号202021862915.0

SSE-135 SUONI III / 索尼3号

Configuration 配置	Capacity 容量		
	2600mAh	2900mAh	3500mAh
13S5P	48V 13.0Ah	48V 14.5Ah	48V 17.5Ah
10S7P	36V 18.2Ah	36V 20.3Ah	36V 24.5Ah
	3500mAh	5000mAh	
10S4P	36V 14.0Ah	36V 20.0Ah	
13S3P	48V 10.5Ah	48V 15.0Ah	
Switch 开关	W/O 无		
IP Level 防水等级	IPX6		
Lock 锁	MECHANICAL LOCK 机械锁		

EN50604



18650 65pcs
/ 21700 40pcs

PATENT NO. / 专利号 2025301257905

SSE-239 SUONI IV FOLDING / 索尼4号折叠款

Configuration 配置	Capacity 容量		
	2600mAh	2900mAh	3500mAh
10S6P	36V 15.6Ah	36V 17.4Ah	36V 21.0Ah
13S5P	48V 13.0Ah	48V 14.5Ah	48V 17.5Ah
	3500mAh	5000mAh	
10S4P	36V 14.0Ah	36V 20.0Ah	
13S3P	48V 11.5Ah	48V 15.0Ah	
Switch 开关	W/O 无		
IP Level 防水等级	IPX6		
Lock 锁	SPRING LOCK 弹簧锁		

21700 50pcs

SSE-124 SEA LION I / 海狮1号

Configuration 配置	Capacity 容量	
	3500mAh	5000mAh
10S5P	36V 17.5Ah	36V 25.0Ah
Switch 开关	W/O 无	
IP Level 防水等级	IPX4	
Lock 锁	SPRING LOCK 弹簧锁	

18650 52pcs
/ 21700 40pcs

SSE-125 SEA LION II / 海狮2号

Configuration 配置	Capacity 容量		
	2600mAh	2900mAh	3500mAh
10S5P	36V 13.0Ah	36V 14.5Ah	36V 17.5Ah
13S4P	48V 10.4Ah	48V 11.6Ah	48V 14.0Ah
	3500mAh	5000mAh	
10S4P	36V 14.0Ah	36V 20.0Ah	
13S3P	48V 10.5Ah	48V 15.0Ah	
Switch 开关	W/O 无		
IP Level 防水等级	IPX4		
Lock 锁	SPRING LOCK 弹簧锁		



⚡ 18650 40pcs

⚡ 18650 60pcs

⚡ 18650 60pcs

SSE-023 SOUTH PACIFIC I / 南洋1号

Configuration 配置	Capacity 容量		
	2600mAh	2900mAh	3500mAh
10S4P	36V 10.4Ah	36V 11.6Ah	36V 14.0Ah
13S3P	48V 7.8Ah	48V 8.7Ah	48V 10.5Ah
Switch 开关	W/O 无		
IP Level 防水等级	IPX4		
Lock 锁	MECHANICAL LOCK 机械锁		

SSE-024 SOUTH PACIFIC II / 南洋2号

Configuration 配置	Capacity 容量		
	2600mAh	2900mAh	3500mAh
10S6P	36V 15.6Ah	36V 17.4Ah	36V 21.0Ah
13S4P	48V 10.4Ah	48V 11.6Ah	48V 14.0Ah
Switch 开关	W/O 无		
IP Level 防水等级	IPX4		
Lock 锁	MECHANICAL LOCK 机械锁		

SSE-097 SOUTH PACIFIC III / 南洋3号

Configuration 配置	Capacity 容量		
	2600mAh	2900mAh	3500mAh
10S6P	36V 15.6Ah	36V 17.4Ah	36V 21.0Ah
13S4P	48V 10.4Ah	48V 11.6Ah	48V 14.0Ah
Switch 开关	W/O 无		
IP Level 防水等级	IPX4		
Lock 锁	MECHANICAL LOCK 机械锁		



⚡ 18650 60pcs

SSE-076 SOUTH PACIFIC III (THICKEN) / 南洋3号(加厚)

Configuration 配置	Capacity 容量		
	2600mAh	2900mAh	3500mAh
10S6P	36V 15.6Ah	36V 17.4Ah	36V 21.0Ah
13S4P	48V 10.4Ah	48V 11.6Ah	48V 14.0Ah
Switch 开关	W/O 无		
IP Level 防水等级	IPX4		
Lock 锁	SPRING LOCK 弹簧锁		

⚡ 18650 60pcs

PATENT NO. / 专利号201821861493.8

SSE-076B SOUTH PACIFIC III (DUAL TUBES) / 南洋3号(双管)

Configuration 配置	Capacity 容量		
	2600mAh	2900mAh	3500mAh
10S6P	36V 15.6Ah	36V 17.4Ah	36V 21.0Ah
13S4P	48V 10.4Ah	48V 11.6Ah	48V 14.0Ah
Switch 开关	W/O 无		
IP Level 防水等级	IPX4		
Lock 锁	SPRING LOCK+SAFETY LOCK 弹簧锁+安全锁		

⚡ 18650 40pcs

PATENT NO. / 专利号202230652112.0 PATENT NO. / 专利号202222606816.1

SSE-201 SOUTH PACIFIC IV IM (TOP PULL) / 南洋4号IM上拉

Configuration 配置	Capacity 容量		
	2600mAh	2900mAh	3500mAh
10S4P	36V 10.4Ah	36V 11.6Ah	36V 14.0Ah
13S3P	48V 7.8Ah	48V 8.7Ah	48V 10.5Ah
Switch 开关	W/O 无		
IP Level 防水等级	IPX4		
Lock 锁	SPRING LOCK 弹簧锁		



⚡ 18650 40pcs

PATENT NO. / 专利号202230652112.0 PATENT NO. / 专利号202222606816.1

SSE-202 SOUTH PACIFIC IV IM(BOTTOM PULL) / 南洋4号IM下拉

Configuration 配置	Capacity 容量		
	2600mAh	2900mAh	3500mAh
10S4P	36V 10.4Ah	36V 11.6Ah	36V 14.0Ah
13S3P	48V 7.8Ah	48V 8.7Ah	48V 10.5Ah
Switch 开关	W/O 无		
IP Level 防水等级	IPX4		
Lock 锁	SPRING LOCK+SAFETY LOCK 弹簧锁+安全锁		

⚡ 18650 65pcs / 21700 30pcs

PATENT NO. / 专利号202230652112.0 PATENT NO. / 专利号202222606816.1

SSE-203 SOUTH PACIFIC IV PRO IM(TOP PULL) / 南洋4号PRO IM上拉

Configuration 配置	Capacity 容量		
	2600mAh	2900mAh	3500mAh
10S6P	36V 15.6Ah	36V 17.4Ah	36V 21.0Ah
13S5P	48V 13.0Ah	48V 14.5Ah	48V 17.5Ah
	3500mAh	5000mAh	
10S3P	36V 10.5Ah	36V 15.0Ah	
13S2P	48V 7.0Ah	48V 10.0Ah	
Switch 开关	W/O 无		
IP Level 防水等级	IPX4		
Lock 锁	SPRING LOCK 弹簧锁		

⚡ 18650 65pcs / 21700 30pcs

PATENT NO. / 专利号202230652112.0 PATENT NO. / 专利号202222606816.1

SSE-204 SOUTH PACIFIC IV PRO IM(BOTTOM PULL) / 南洋4号PRO IM下拉

Configuration 配置	Capacity 容量		
	2600mAh	2900mAh	3500mAh
10S6P	36V 15.6Ah	36V 17.4Ah	36V 21.0Ah
13S5P	48V 13.0Ah	48V 14.5Ah	48V 17.5Ah
	3500mAh	5000mAh	
10S3P	36V 10.5Ah	36V 15.0Ah	
13S2P	48V 7.0Ah	48V 10.0Ah	
Switch 开关	W/O 无		
IP Level 防水等级	IPX4		
Lock 锁	SPRING LOCK 弹簧锁		



18650 52pcs
/ 21700 30pcs

PATENT NO. / 专利号202230652112.0 PATENT NO. / 专利号202222606816.1

SSE-229 SOUTH PACIFIC PRO IM/ 南洋4号PRO IM 内销款

Configuration 配置	Capacity 容量		
	2600mAh	2900mAh	3500mAh
10S5P	36V 13.0Ah	36V 14.5Ah	36V 17.5Ah
13S4P	48V 10.4Ah	48V 11.6Ah	48V 14.0Ah
	3500mAh	5000mAh	
10S3P	36V 10.5Ah	36V 15.0Ah	
13S2P	48V 7.0Ah	48V 10.0Ah	
Switch 开关	W/O 无		
IP Level 防水等级	IPX4		
Lock 锁	SPRING LOCK 弹簧锁		



18650 40pcs

PATENT NO. / 专利号202230405746.6

SSE-085 SOUTH PACIFIC IV(TOP PULL) / 南洋4号(上拉)

Configuration 配置	Capacity 容量		
	2600mAh	2900mAh	3500mAh
10S4P	36V 10.4Ah	36V 11.6Ah	36V 14.0Ah
13S3P	48V 7.8Ah	48V 8.7Ah	48V 10.5Ah
Switch 开关	W/O 无		
IP Level 防水等级	IPX4		
Lock 锁	SPRING LOCK 弹簧锁		



18650 40pcs

PATENT NO. / 专利号202230405746.6

SSE-102 SOUTH PACIFIC IV(BOTTOM PULL) / 南洋4号(下拉)

Configuration 配置	Capacity 容量		
	2600mAh	2900mAh	3500mAh
10S6P	36V 15.6Ah	36V 17.4Ah	36V 21.0Ah
13S4P	48V 10.4Ah	48V 11.6Ah	48V 14.0Ah
Switch 开关	W/O 无		
IP Level 防水等级	IPX4		
Lock 锁	SPRING LOCK+SAFETY LOCK 弹簧锁+安全锁		



⚡ 18650 40pcs

PATENT NO. / 专利号202230652112.0 PATENT NO. / 专利号202222606816.1

SSE-232 SOUTH PACIFIC IV S/ 南洋4号带开关款

Configuration 配置	Capacity 容量		
	2600mAh	2900mAh	3500mAh
10S4P	36V 10.4Ah	36V 11.6Ah	36V 14.0Ah
13S3P	48V 7.8Ah	48V 8.7Ah	48V 10.5Ah
Switch 开关	WITH 有		
IP Level 防水等级	IPX4		
Lock 锁	SPRING LOCK 弹簧锁		



⚡ 18650 65pcs / 21700 30pcs

PATENT NO. / 专利号202230405746.6

SSE-101 SOUTH PACIFIC IV PRO(TOP PULL) / 南洋4号PRO(上拉)

Configuration 配置	Capacity 容量		
	2600mAh	2900mAh	3500mAh
10S6P	36V 15.6Ah	36V 17.4Ah	36V 21.0Ah
13S5P	48V 13.0Ah	48V 14.5Ah	48V 17.5Ah
	3500mAh	5000mAh	
10S3P	36V 10.5Ah	36V 15.0Ah	
Switch 开关	W/O 无		
IP Level 防水等级	IPX4		
Lock 锁	SPRING LOCK 弹簧锁		



⚡ 18650 65pcs / 21700 30pcs

PATENT NO. / 专利号202230405746.6

SSE-106 SOUTH PACIFIC IV PRO(BOTTOM PULL) / 南洋4号PRO(下拉)

Configuration 配置	Capacity 容量		
	2600mAh	2900mAh	3500mAh
10S6P	36V 15.6Ah	36V 17.4Ah	36V 21.0Ah
13S5P	48V 13.0Ah	48V 14.5Ah	48V 17.5Ah
	3500mAh	5000mAh	
10S3P	36V 10.5Ah	36V 15.0Ah	
Switch 开关	W/O 无		
IP Level 防水等级	IPX4		
Lock 锁	SPRING LOCK+SAFETY LOCK 弹簧锁+安全锁		



 **18650 60pcs**

 **18650 52pcs**

 **18650 60pcs**

SSE-070 SUNLIGHT II / 阳光2号

Configuration 配置	Capacity 容量		
	2600mAh	2900mAh	3500mAh
10S6P	36V 15.6Ah	36V 17.4Ah	36V 21.0Ah
13S4P	48V 10.4Ah	48V 11.6Ah	48V 14.0Ah
Switch 开关	W/O 无		
IP Level 防水等级	IPX4		
Lock 锁	MECHANICAL LOCK 机械锁		

SSE-059 LUSHAN I / 庐山1号

Configuration 配置	Capacity 容量		
	2600mAh	2900mAh	3500mAh
10S5P	36V 13.0Ah	36V 14.5Ah	36V 17.5Ah
13S4P	48V 10.4Ah	48V 11.6Ah	48V 14.0Ah
Switch 开关	W/O 无		
IP Level 防水等级	IPX4		
Lock 锁	SPRING LOCK 弹簧锁		

SSE-020 XUELONG I / 雪龙1号

Configuration 配置	Capacity 容量		
	2600mAh	2900mAh	3500mAh
10S6P	36V 15.6Ah	36V 17.4Ah	36V 21.0Ah
13S4P	48V 10.4Ah	48V 11.6Ah	48V 14.0Ah
Switch 开关	W/O 无		
IP Level 防水等级	IPX4		
Lock 锁	MECHANICAL LOCK 机械锁		



 **18650 50pcs**

 **18650 75pcs**

 **18650 50pcs**

SSE-165 SEIKO III / 金工3号

Configuration 配置	Capacity 容量		
10S5P	2600mAh 36V 13.0Ah	2900mAh 36V 14.5Ah	3500mAh 36V 17.5Ah
Switch 开关	W/O 无		
IP Level 防水等级	IPX4		
Lock 锁	POWER LOCK 电源锁		

SSE-185 SEIKO III PRO / 金工3号PRO

Configuration 配置	Capacity 容量		
10S7P	2600mAh 36V 18.2Ah	2900mAh 36V 20.3Ah	3500mAh 36V 24.5Ah
13S5P	48V 13.0Ah	48V 14.5Ah	48V 17.5Ah
Switch 开关	W/O 无		
IP Level 防水等级	IPX4		
Lock 锁	POWER LOCK 电源锁		

SSE-166 SEIKO IV / 金工4号

Configuration 配置	Capacity 容量		
10S5P	2600mAh 36V 13.0Ah	2900mAh 36V 14.5Ah	3500mAh 36V 17.5Ah
Switch 开关	W/O 无		
IP Level 防水等级	IPX4		
Lock 锁	POWER LOCK 电源锁		



⚡ 18650 50pcs

SSE-177 SEIKO V / 金工5号

Configuration 配置	Capacity 容量		
10S5P	2600mAh 36V 13.0Ah	2900mAh 36V 14.5Ah	3500mAh 36V 17.5Ah
Switch 开关	W/O 无		
IP Level 防水等级	IPX4		
Lock 锁	POWER LOCK 电源锁		

⚡ 18650 50pcs

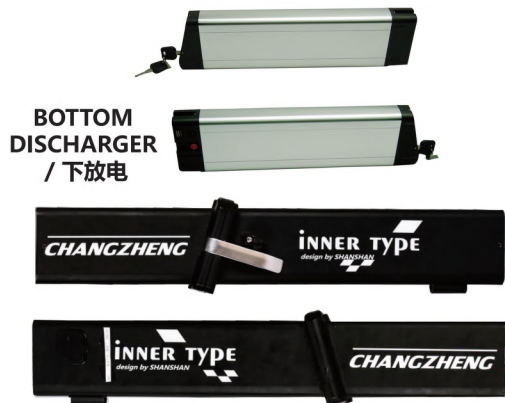
SSE-178 SEIKO VI / 金工6号

Configuration 配置	Capacity 容量		
10S5P	2600mAh 36V 13.0Ah	2900mAh 36V 14.5Ah	3500mAh 36V 17.5Ah
Switch 开关	W/O 无		
IP Level 防水等级	IPX4		
Lock 锁	POWER LOCK 电源锁		

⚡ 18650 40pcs

SSE-062 CHANGZHENG I / 长征1号 (上放电)

Configuration 配置	Capacity 容量		
10S4P	2600mAh 36V 10.4Ah	2900mAh 36V 11.6Ah	3500mAh 36V 14.0Ah
13S3P	48V 7.8Ah	48V 8.7Ah	48V 10.5Ah
Switch 开关	WITH 有		
IP Level 防水等级	IPX4		
Lock 锁	MECHANICAL LOCK 机械锁		



⚡ 18650 30pcs

SSE-063 CHANGZHENG I / 长征1号 (下放电)

Configuration 配置	Capacity 容量		
	2600mAh	2900mAh	3500mAh
10S4P	36V 10.4Ah	36V 11.6Ah	36V 14.0Ah
13S3P	48V 7.8Ah	48V 8.7Ah	48V 10.5Ah
Switch 开关	WITH 有		
IP Level 防水等级	IPX4		
Lock 锁	MECHANICAL LOCK 机械锁		

⚡ 18650 60pcs / 21700 40pcs

SSE-137 KAILONG I / 凯龙1号

Configuration 配置	Capacity 容量		
	2600mAh	2900mAh	3500mAh
10S6P	36V 15.6Ah	36V 17.4Ah	36V 21.0Ah
	3500mAh	5000mAh	
10S4P	36V 14.0Ah	36V 20.0Ah	
13S3P	48V 10.5Ah	48V 15.0Ah	
Switch 开关	W/O 无		
IP Level 防水等级	W/O 无		
Lock 锁	MECHANICAL LOCK 机械锁		

⚡ 18650 78pcs

SSE-132 BAOLONG I / 宝龙1号

Configuration 配置	Capacity 容量		
	2600mAh	2900mAh	3500mAh
10S7P	36V 18.2Ah	36V 20.3Ah	36V 24.5Ah
13S6P	48V 15.6Ah	48V 17.4Ah	48V 21.0Ah
Switch 开关	WITH 有		
IP Level 防水等级	W/O 无		
Lock 锁	MECHANICAL LOCK 机械锁		



 **18650 91pcs**

 **18650 52pcs**

 **18650 52pcs**

SSE-078 SONGXIA I / 松下1号

Configuration 配置	Capacity 容量		
	2600mAh	2900mAh	3500mAh
10S9P	36V 23.4Ah	36V 26.1Ah	36V 31.5Ah
13S7P	48V 18.2Ah	48V 20.3Ah	48V 24.5Ah
Switch 开关	WITH 有		
IP Level 防水等级	W/O 无		
Lock 锁	MECHANICAL LOCK 机械锁		

SSE-079 SONGXIA II / 松下2号

Configuration 配置	Capacity 容量		
	2600mAh	2900mAh	3500mAh
10S5P	36V 13.0Ah	36V 14.5Ah	36V 17.5Ah
13S4P	48V 10.4Ah	48V 11.6Ah	48V 14.0Ah
Switch 开关	WITH 有		
IP Level 防水等级	W/O 无		
Lock 锁	MECHANICAL LOCK 机械锁		

SSE-088 SONGXIA III / 松下3号

Configuration 配置	Capacity 容量		
	2600mAh	2900mAh	3500mAh
10S5P	36V 13.0Ah	36V 14.5Ah	36V 17.5Ah
13S4P	48V 10.4Ah	48V 11.6Ah	48V 14.0Ah
Switch 开关	WITH 有		
IP Level 防水等级	W/O 无		
Lock 锁	MECHANICAL LOCK 机械锁		



 **18650 60pcs**
/ 21700 40pcs

 **18650 40pcs**

 **18650 30pcs**

SSE-115 SONGXIA IV / 松下4号

Configuration 配置	Capacity 容量		
10S6P	2600mAh	2900mAh	3500mAh
	36V 15.6Ah	36V 17.4Ah	36V 21.0Ah
10S4P	3500mAh	5000mAh	
	36V 14.0Ah	36V 20.0Ah	
13S3P	48V 10.5Ah	48V 15.0Ah	
Switch 开关	WITH 有		
IP Level 防水等级	W/O 无		
Lock 锁	MECHANICAL LOCK 机械锁		

SSE-060 HAITIAN III / 海天3号

Configuration 配置	Capacity 容量		
10S4P	2600mAh	2900mAh	3500mAh
	36V 10.4Ah	36V 11.6Ah	36V 14.0Ah
	13S3P	48V 7.8Ah	48V 8.7Ah
Switch 开关	WITH 有		
IP Level 防水等级	W/O 无		
Lock 锁	MECHANICAL LOCK 机械锁		

SSE-083 HAIBAO II-1 / 海宝2号1型

Configuration 配置	Capacity 容量		
10S3P	2600mAh	2900mAh	3500mAh
	36V 7.8Ah	36V 8.7Ah	36V 10.5Ah
	13S2P	48V 5.2Ah	48V 5.8Ah
Switch 开关	WITH 有		
IP Level 防水等级	W/O 无		
Lock 锁	MECHANICAL LOCK 机械锁		



⚡ 18650 40pcs

SSE-028 HAITIAN I / 海天1号

Configuration 配置	Capacity 容量		
	2600mAh	2900mAh	3500mAh
10S4P	36V 10.4Ah	36V 11.6Ah	36V 14.0Ah
13S3P	48V 7.8Ah	48V 8.7Ah	48V 10.5Ah
Switch 开关	WITH 有		
IP Level 防水等级	W/O 无		
Lock 锁	MECHANICAL LOCK 机械锁		

⚡ 18650 40pcs

SSE-027 HAIBAO II / 海宝2号

Configuration 配置	Capacity 容量		
	2600mAh	2900mAh	3500mAh
10S4P	36V 10.4Ah	36V 11.6Ah	36V 14.0Ah
13S3P	48V 7.8Ah	48V 8.7Ah	48V 10.5Ah
Switch 开关	WITH 有		
IP Level 防水等级	W/O 无		
Lock 锁	MECHANICAL LOCK 机械锁		

⚡ 18650 40pcs

SSE-039 HAIYING II / 海鹰2号

Configuration 配置	Capacity 容量		
	2600mAh	2900mAh	3500mAh
10S4P	36V 10.4Ah	36V 11.6Ah	36V 14.0Ah
13S3P	48V 7.8Ah	48V 8.7Ah	48V 10.5Ah
Switch 开关	WITH 有		
IP Level 防水等级	W/O 无		
Lock 锁	MECHANICAL LOCK 机械锁		



SHORT VERSION
/ 短款



⚡ 18650 40pcs

⚡ 18650 40/30pcs
(LONG & SHORT VERSION)

⚡ 18650 52pcs

SSE-047 HAIYING IV / 海鹰4号

Configuration 配置	Capacity 容量		
	2600mAh	2900mAh	3500mAh
10S4P	36V 10.4Ah	36V 11.6Ah	36V 14.0Ah
13S3P	48V 7.8Ah	48V 8.7Ah	48V 10.5Ah
Switch 开关	WITH 有		
IP Level 防水等级	W/O 无		
Lock 锁	MECHANICAL LOCK 机械锁		

SSE-126 SEA WIND (LONG&SHORT VERSION) / 海风 (长款&短款)

Configuration 配置	Capacity 容量		
	2600mAh	2900mAh	3500mAh
10S4P	36V 10.4Ah	36V 11.6Ah	36V 14.0Ah
13S3P	48V 7.8Ah	48V 8.7Ah	48V 10.5Ah
10S3P	36V 7.8Ah	36V 8.7Ah	36V 10.5Ah
13S2P	48V 5.2Ah	48V 5.8Ah	48V 7.0Ah
Switch 开关	WITH 有		
IP Level 防水等级	W/O 无		
Lock 锁	MECHANICAL LOCK 机械锁		

SSE-072 SOLAR IMPULSE I / 阳光动力1号

Configuration 配置	Capacity 容量		
	2600mAh	2900mAh	3500mAh
10S5P	36V 13.0Ah	36V 14.5Ah	36V 17.5Ah
13S4P	48V 10.4Ah	48V 11.6Ah	48V 14.0Ah
Switch 开关	W/O 无		
IP Level 防水等级	W/O 无		
Lock 锁	MECHANICAL LOCK 机械锁		



⚡ 18650 52pcs

SSE-117 SOLAR IMPULSE II / 阳光动力2号

Configuration 配置	Capacity 容量		
	2600mAh	2900mAh	3500mAh
10S5P	36V 13.0Ah	36V 14.5Ah	36V 17.5Ah
13S4P	48V 10.4Ah	48V 11.6Ah	48V 14.0Ah
Switch 开关	W/O 无		
IP Level 防水等级	W/O 无		
Lock 锁	MECHANICAL LOCK 机械锁		



⚡ 18650 30pcs

SSE-071 ULTRA SLIM / 超薄款

Configuration 配置	Capacity 容量		
	2600mAh	2900mAh	3500mAh
10S3P	36V 7.8Ah	36V 8.7Ah	36V 10.5Ah
13S2P	48V 5.2Ah	48V 5.8Ah	48V 7.0Ah
Switch 开关	W/O 无		
IP Level 防水等级	W/O 无		
Lock 锁	MECHANICAL LOCK 机械锁		



⚡ 18650 52pcs

PATENT NO. / 专利号201830489967.X

SSE-067 JILONG I / 吉龙1号

Configuration 配置	Capacity 容量		
	2600mAh	2900mAh	3500mAh
10S5P	36V 13.0Ah	36V 14.5Ah	36V 17.5Ah
13S4P	48V 10.4Ah	48V 11.6Ah	48V 14.0Ah
Switch 开关	W/O 无		
IP Level 防水等级	W/O 无		
Lock 锁	MECHANICAL LOCK 机械锁		



⚡ 18650 52pcs

PATENT NO. / 专利号201330371322.1

SSE-080 JILONG III / 吉龙3号

Configuration 配置	Capacity 容量		
	2600mAh	2900mAh	3500mAh
10S5P	36V 13.0Ah	36V 14.5Ah	36V 17.5Ah
13S4P	48V 10.4Ah	48V 11.6Ah	48V 14.0Ah
Switch 开关	W/O 无		
IP Level 防水等级	W/O 无		
Lock 锁	MECHANICAL LOCK 机械锁		



⚡ 18650 52pcs

PATENT NO. / 专利号201830489966.5

SSE-099 JILONG IV / 吉龙4号

Configuration 配置	Capacity 容量		
	2600mAh	2900mAh	3500mAh
10S5P	36V 13.0Ah	36V 14.5Ah	36V 17.5Ah
13S4P	48V 10.4Ah	48V 11.6Ah	48V 14.0Ah
Switch 开关	W/O 无		
IP Level 防水等级	W/O 无		
Lock 锁	MECHANICAL LOCK 机械锁		



⚡ 18650 65pcs

SSE-073 NEW SEAL / 新海豹

Configuration 配置	Capacity 容量		
	2600mAh	2900mAh	3500mAh
10S6P	36V 15.6Ah	36V 17.4Ah	36V 21.0Ah
13S5P	48V 13.0Ah	48V 14.5Ah	48V 17.5Ah
Switch 开关	WITH 有		
IP Level 防水等级	W/O 无		
Lock 锁	MECHANICAL LOCK 机械锁		



 **18650 65pcs**

SSE-073A NEW SEAL A / 新海豹A型			
Configuration 配置	Capacity 容量		
	2600mAh	2900mAh	3500mAh
10S6P	36V 15.6Ah	36V 17.4Ah	36V 21.0Ah
13S5P	48V 13.0Ah	48V 14.5Ah	48V 17.5Ah
Switch 开关	WITH 有		
IP Level 防水等级	W/O 无		
Lock 锁	MECHANICAL LOCK 机械锁		



 **18650 52pcs**

SSE-003 DOLPHIN I / 海豚1号			
Configuration 配置	Capacity 容量		
	2600mAh	2900mAh	3500mAh
10S5P	36V 13.0Ah	36V 14.5Ah	36V 17.5Ah
13S4P	48V 10.4Ah	48V 11.6Ah	48V 14.0Ah
Switch 开关	W/O 无		
IP Level 防水等级	W/O 无		
Lock 锁	MECHANICAL LOCK 机械锁		



 **18650 52pcs**

SSE-005 DOLPHIN III / 海豚3号			
Configuration 配置	Capacity 容量		
	2600mAh	2900mAh	3500mAh
10S5P	36V 13.0Ah	36V 14.5Ah	36V 17.5Ah
13S4P	48V 10.4Ah	48V 11.6Ah	48V 14.0Ah
Switch 开关	WITH 有		
IP Level 防水等级	W/O 无		
Lock 锁	MECHANICAL LOCK 机械锁		



 **18650 52pcs**

 **18650 52pcs**

 **18650 52pcs**

SSE-007 TIANLONG I / 天龙1号

Configuration 配置	Capacity 容量		
	2600mAh	2900mAh	3500mAh
10S5P	36V 13.0Ah	36V 14.5Ah	36V 17.5Ah
13S4P	48V 10.4Ah	48V 11.6Ah	48V 14.0Ah
Switch 开关	W/O 无		
IP Level 防水等级	W/O 无		
Lock 锁	POWER LOCK 电源锁		

SSE-008 TIANLONG II / 天龙2号

Configuration 配置	Capacity 容量		
	2600mAh	2900mAh	3500mAh
10S5P	36V 13.0Ah	36V 14.5Ah	36V 17.5Ah
13S4P	48V 10.4Ah	48V 11.6Ah	48V 14.0Ah
Switch 开关	W/O 无		
IP Level 防水等级	W/O 无		
Lock 锁	POWER LOCK 电源锁		

SSE-006 TIANLONG III / 天龙3号

Configuration 配置	Capacity 容量		
	2600mAh	2900mAh	3500mAh
10S5P	36V 13.0Ah	36V 14.5Ah	36V 17.5Ah
13S4P	48V 10.4Ah	48V 11.6Ah	48V 14.0Ah
Switch 开关	W/O 无		
IP Level 防水等级	W/O 无		
Lock 锁	POWER LOCK 电源锁		



⚡ 18650 30pcs

PATENT NO. / 专利号202430115295.1

SSE-223 CHANON I / 长虹1号

Configuration 配置	Capacity 容量		
	2600mAh	2900mAh	3500mAh
10S3P	36V 7.8Ah	36V 8.7Ah	36V 10.5Ah
13S2P	48V 5.2Ah	48V 5.8Ah	48V 7.0Ah
Switch 开关	W/O 无		
IP Level 防水等级	IPX6		
Lock 锁	SPRING LOCK 弹簧锁		

⚡ 18650 40pcs

PATENT NO. / 专利号202430115295.1

SSE-224 CHANON II / 长虹2号

Configuration 配置	Capacity 容量		
	2600mAh	2900mAh	3500mAh
10S4P	36V 10.4Ah	36V 11.6Ah	36V 14.0Ah
13S3P	48V 7.8Ah	48V 8.7Ah	48V 10.5Ah
Switch 开关	W/O 无		
IP Level 防水等级	IPX6		
Lock 锁	SPRING LOCK 弹簧锁		

⚡ 18650 30pcs

PATENT NO. / 专利号202430115295.1

SSE-245 CHANON III / 长虹3号

Configuration 配置	Capacity 容量		
	2600mAh	2900mAh	3500mAh
10S3P	36V 7.8Ah	36V 8.7Ah	36V 10.5Ah
13S2P	48V 5.2Ah	48V 5.8Ah	48V 7.0Ah
Switch 开关	WITH 有		
IP Level 防水等级	IPX6		
Lock 锁	SPRING LOCK 弹簧锁		



⚡ 18650 40pcs

SSE-111 STARFISH II / 海星2号

Configuration 配置	Capacity 容量		
	2600mAh	2900mAh	3500mAh
10S4P	36V 10.4Ah	36V 11.6Ah	36V 14.0Ah
13S3P	48V 7.8Ah	48V 8.7Ah	48V 10.5Ah
Switch 开关	W/O 无		
IP Level 防水等级	W/O 无		
Lock 锁	SPRING LOCK 弹簧锁		



⚡ 18650 30pcs

SSE-121 HIER I / 海尔1号

Configuration 配置	Capacity 容量		
	2600mAh	2900mAh	3500mAh
10S3P	36V 7.8Ah	36V 8.7Ah	36V 10.5Ah
13S2P	48V 5.2Ah	48V 5.8Ah	48V 7.0Ah
Switch 开关	W/O 无		
IP Level 防水等级	W/O 无		
Lock 锁	MECHANICAL LOCK 机械锁		



⚡ 18650 30pcs

SSE-128 HIER G30 / 海尔G30

Configuration 配置	Capacity 容量		
	2600mAh	2900mAh	3500mAh
10S3P	36V 7.8Ah	36V 8.7Ah	36V 10.5Ah
13S2P	48V 5.2Ah	48V 5.8Ah	48V 7.0Ah
Switch 开关	WITH 有		
IP Level 防水等级	IPX4		
Lock 锁	SELF-MADE MECHANICAL LOCK 自制机械锁		



⚡ 18650 52pcs

SSE-140 SILVER FISH(DUAL FUSES) / 银鱼双保险款 (大功率)

Configuration 配置	Capacity 容量		
	2600mAh	2900mAh	3500mAh
10S5P	36V 13.0Ah	36V 14.5Ah	36V 17.5Ah
13S4P	48V 10.4Ah	48V 11.6Ah	48V 14.0Ah
Switch 开关	W/O 无		
IP Level 防水等级	W/O 无		
Lock 锁	POWER LOCK 电源锁		



⚡ 18650 60pcs

PATENT NO. / 专利号201520999191.7

SSE-053 SILVER FISH(SHOCKPROOF TYPE) / 银鱼防震款

Configuration 配置	Capacity 容量		
	2600mAh	2900mAh	3500mAh
10S5P	36V 13.0Ah	36V 14.5Ah	36V 17.5Ah
10S6P	36V 15.6Ah	36V 17.4Ah	36V 21.0Ah
13S4P	48V 10.4Ah	48V 11.6Ah	48V 14.0Ah
Switch 开关	W/O 无		
IP Level 防水等级	W/O 无		
Lock 锁	POWER LOCK 电源锁		



⚡ 18650 65pcs

SSE-048 SILVER FISH(SIMPLE TYPE) / 银鱼简易款

Configuration 配置	Capacity 容量		
	2600mAh	2900mAh	3500mAh
10S6P	36V 15.6Ah	36V 17.4Ah	36V 21.0Ah
13S5P	48V 13.0Ah	48V 14.5Ah	48V 17.5Ah
Switch 开关	W/O 无		
IP Level 防水等级	W/O 无		
Lock 锁	POWER LOCK 电源锁		



⚡ 18650 65pcs

⚡ 18650 65pcs

⚡ 18650 65pcs

SSE-015 SILVER FISH(TOP DISCHARGER) / 银鱼上放电

Configuration 配置	Capacity 容量		
	2600mAh	2900mAh	3500mAh
10S6P	36V 15.6Ah	36V 17.4Ah	36V 21.0Ah
13S5P	48V 13.0Ah	48V 14.5Ah	48V 17.5Ah
Switch 开关	W/O 无		
IP Level 防水等级	W/O 无		
Lock 锁	POWER LOCK 电源锁		

SSE-014 SILVER FISH(BOTTOM DISCHARGER) / 银鱼下放电

Configuration 配置	Capacity 容量		
	2600mAh	2900mAh	3500mAh
10S6P	36V 15.6Ah	36V 17.4Ah	36V 21.0Ah
13S5P	48V 13.0Ah	48V 14.5Ah	48V 17.5Ah
Switch 开关	W/O 无		
IP Level 防水等级	W/O 无		
Lock 锁	POWER LOCK 电源锁		

SSE-012 SILVER FISH(W/USB) / USB银鱼

Configuration 配置	Capacity 容量		
	2600mAh	2900mAh	3500mAh
10S6P	36V 15.6Ah	36V 17.4Ah	36V 21.0Ah
13S5P	48V 13.0Ah	48V 14.5Ah	48V 17.5Ah
Switch 开关	W/O 无		
IP Level 防水等级	W/O 无		
Lock 锁	POWER LOCK 电源锁		



⚡ 18650 50pcs

SSE-013 SILVER FISH(BOTTOM DISCHARGER) / 银鱼下放电

Configuration 配置	Capacity 容量		
10S5P	2600mAh 36V 13.0Ah	2900mAh 36V 14.5Ah	3500mAh 36V 17.5Ah
Switch 开关	W/O 无		
IP Level 防水等级	W/O 无		
Lock 锁	POWER LOCK 电源锁		

⚡ 18650 50pcs

SSE-016 SILVER FISH(TOP DISCHARGER) / 银鱼上放电

Configuration 配置	Capacity 容量		
10S5P	2600mAh 36V 13.0Ah	2900mAh 36V 14.5Ah	3500mAh 36V 17.5Ah
Switch 开关	W/O 无		
IP Level 防水等级	W/O 无		
Lock 锁	POWER LOCK 电源锁		

⚡ 18650 60pcs

SSE-010 ISRAEL SILVER FISH / 以色列银鱼

Configuration 配置	Capacity 容量		
10S6P	2600mAh 36V 15.6Ah	2900mAh 36V 17.4Ah	3500mAh 36V 21.0Ah
Switch 开关	W/O 无		
IP Level 防水等级	W/O 无		
Lock 锁	POWER LOCK(TOP)+MECHANICAL LOCK(BOTTOM) 电源锁 (上) +机械锁 (下)		



⚡ 18650 60pcs

SSE-011 NEW ZEALAND SILVER FISH / 新西兰银鱼

Configuration 配置	Capacity 容量		
10S6P	2600mAh 36V 15.6Ah	2900mAh 36V 17.4Ah	3500mAh 36V 21.0Ah
Switch 开关	W/O 无		
IP Level 防水等级	W/O 无		
Lock 锁	POWER LOCK 电源锁		

⚡ 18650 60pcs

SSE-045 SILVER FISH(BOTTOM DISCHARGER) / 银鱼下放电

Configuration 配置	Capacity 容量		
10S6P	2600mAh 36V 15.6Ah	2900mAh 36V 17.4Ah	3500mAh 36V 21.0Ah
Switch 开关	W/O 无		
IP Level 防水等级	W/O 无		
Lock 锁	POWER LOCK 电源锁		

⚡ 18650 60pcs

SSE-022 HAIYIN(TOP DISCHARGER) / 海银上放电

Configuration 配置	Capacity 容量		
10S6P	2600mAh 36V 15.6Ah	2900mAh 36V 17.4Ah	3500mAh 36V 21.0Ah
Switch 开关	W/O 无		
IP Level 防水等级	W/O 无		
Lock 锁	POWER LOCK 电源锁		



⚡ 18650 60pcs

⚡ 18650 65pcs

⚡ 18650 65pcs

SSE-019 HAIYIN (BOTTOM DISCHARGER) / 海银下放电

Configuration 配置	Capacity 容量		
10S6P	2600mAh	2900mAh	3500mAh
	36V 15.6Ah	36V 17.4Ah	36V 21.0Ah
Switch 开关	W/O 无		
IP Level 防水等级	W/O 无		
Lock 锁	POWER LOCK 电源锁		

SSE-055 ALL-PLASTIC SILVER FISH (BOTTOM DISCHARGER) / 全塑银鱼下放电

Configuration 配置	Capacity 容量		
10S6P	2600mAh	2900mAh	3500mAh
	36V 15.6Ah	36V 17.4Ah	36V 21.0Ah
13S5P	48V 13.0Ah	48V 14.5Ah	48V 17.5Ah
Switch 开关	WITH 有		
IP Level 防水等级	W/O 无		
Lock 锁	MECHANICAL LOCK 机械锁		

SSE-054 ALL-PLASTIC SILVER FISH (TOP DISCHARGER) / 全塑银鱼上放电

Configuration 配置	Capacity 容量		
10S6P	2600mAh	2900mAh	3500mAh
	36V 15.6Ah	36V 17.4Ah	36V 21.0Ah
13S5P	48V 13.0Ah	48V 14.5Ah	48V 17.5Ah
Switch 开关	W/O 无		
IP Level 防水等级	W/O 无		
Lock 锁	MECHANICAL LOCK 机械锁		



⚡ 18650 90pcs

⚡ 18650 90pcs

⚡ 18650 40pcs

SSE-051 JINMA I (TOP DISCHARGER) / 金马1号 (上放电)

Configuration 配置	Capacity 容量		
	2600mAh	2900mAh	3500mAh
10S9P	36V 23.4Ah	36V 26.1Ah	36V 31.5Ah
13S6P	48V 15.6Ah	48V 17.4Ah	48V 21.0Ah
Switch 开关	W/O 无		
IP Level 防水等级	W/O 无		
Lock 锁	MECHANICAL LOCK 机械锁		

SSE-056 JINMA I (BOTTOM DISCHARGER) / 金马1号 (下放电)

Configuration 配置	Capacity 容量		
	2600mAh	2900mAh	3500mAh
10S9P	36V 23.4Ah	36V 26.1Ah	36V 31.5Ah
13S6P	48V 15.6Ah	48V 17.4Ah	48V 21.0Ah
Switch 开关	W/O 无		
IP Level 防水等级	W/O 无		
Lock 锁	MECHANICAL LOCK 机械锁		

SSE-025 LITTLE FROG / 小青蛙

Configuration 配置	Capacity 容量		
	2600mAh	2900mAh	3500mAh
10S4P	36V 10.4Ah	36V 11.6Ah	36V 14.0Ah
13S3P	48V 7.8Ah	48V 8.7Ah	48V 10.5Ah
Switch 开关	W/O 无		
IP Level 防水等级	W/O 无		
Lock 锁	POWER LOCK 电源锁		



⚡ 18650 30pcs

SSE-029 JENNY I / 珍妮包1号			
Configuration 配置	Capacity 容量		
	2600mAh	2900mAh	3500mAh
10S3P	36V 7.8Ah	36V 8.7Ah	36V 10.5Ah
13S2P	48V 5.0Ah	48V 5.8Ah	48V 7.0Ah
Switch 开关	WITH 有		
IP Level 防水等级	W/O 无		
Lock 锁	MECHANICAL LOCK 机械锁		

⚡ 18650 40pcs

SSE-017 JENNY II / 珍妮包2号			
Configuration 配置	Capacity 容量		
	2600mAh	2900mAh	3500mAh
10S4P	36V 10.4Ah	36V 11.6Ah	36V 14.0Ah
13S3P	48V 7.8Ah	48V 8.7Ah	48V 10.5Ah
Switch 开关	WITH 有		
IP Level 防水等级	W/O 无		
Lock 锁	MECHANICAL LOCK 机械锁		

⚡ 18650 40pcs

SSE-026 HAIBAO I / 海宝1号			
Configuration 配置	Capacity 容量		
	2600mAh	2900mAh	3500mAh
10S4P	36V 10.4Ah	36V 11.6Ah	36V 14.0Ah
13S3P	48V 7.8Ah	48V 8.7Ah	48V 10.5Ah
Switch 开关	WITH 有		
IP Level 防水等级	W/O 无		
Lock 锁	MECHANICAL LOCK 机械锁		



⚡ 18650 40pcs

⚡ 21700 108pcs

⚡ 21700 80pcs

PATENT NO. / 专利号202330150613.3 PATENT NO. / 专利号202330008469.X

SSE-035 HAIBAO I-2 / 海宝1号2型

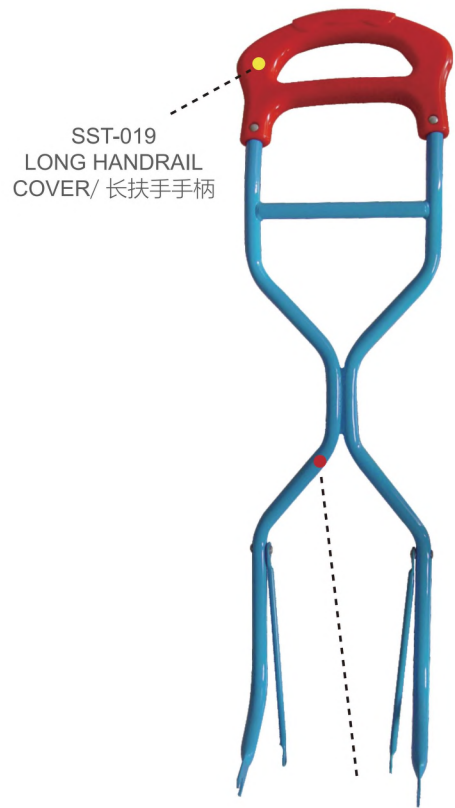
Configuration 配置	Capacity 容量		
	2600mAh	2900mAh	3500mAh
10S4P	36V 10.4Ah	36V 11.6Ah	36V 14.0Ah
13S3P	48V 7.8Ah	48V 8.7Ah	48V 10.5Ah
Switch 开关	WITH 有		
IP Level 防水等级	W/O 无		
Lock 锁	MECHANICAL LOCK 机械锁		

SSE-197 SHANSHAN I / 山山1号

Configuration 配置	Capacity 容量	
	3500mAh	5000mAh
10S10P	36V 35.0Ah	36V 50.0Ah
13S8P	48V 28.0Ah	48V 40.0Ah
14S7P	52V 24.5Ah	52V 35.0Ah
Switch 开关	W/O 无	
IP Level 防水等级	IPX5	
Lock 锁	MECHANICAL LOCK+SPRING LOCK 机械锁+弹簧锁	

SSE-198 SHANSHAN II / 山山2号

Configuration 配置	Capacity 容量	
	3500mAh	5000mAh
10S8P	36V 28.0Ah	36V 40.0Ah
13S6P	48V 21.0Ah	48V 30.0Ah
14S5P	52V 17.5Ah	52V 25.0Ah
Switch 开关	W/O 无	
IP Level 防水等级	IPX5	
Lock 锁	MECHANICAL LOCK 机械锁	



SST-019
LONG HANDRAIL
COVER/ 长扶手手柄

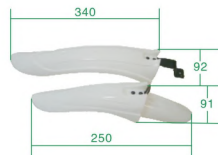
SST-020
CHILDREN'S BIKE
LONG HANDRAIL/ 童车长扶手



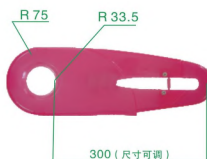
SADDLE COVER/ 坐垫保护套



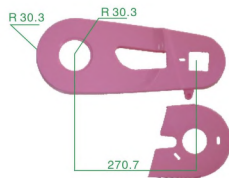
SSB-009A
16-18"
DOUBLE COLOUR
BASKET / 菜篮



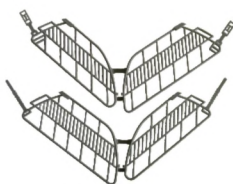
SSF-005
12-14"
FENDER/ 土除



SSCB-029
16-18"
CHAIN COVER/ 链盖



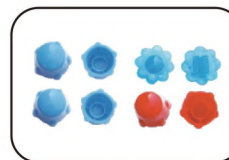
SSCB-013
12" CHAIN COVER/ 链盖



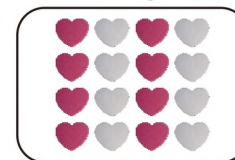
SSBA-008B
DRESS COVER/ 护裙网



SSN-002
SPOKE
PLASTIC PART / 钢丝装饰件



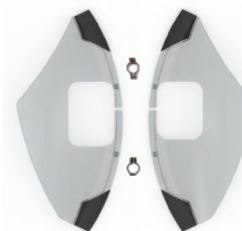
SSN-005
SPOKE
PLASTIC PART / 钢丝装饰件



SSN-003
SPOKE
PLASTIC PART / 钢丝装饰件



SSJ-012
WIRE BUCKLE / 线扣



012-12-097B
DRESS COVER / 护裙网



SSCB-023
CHAIN COVER / 链盖



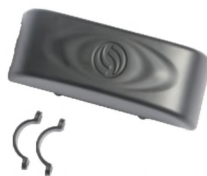
SSCB-022
CHAIN COVER / 链盖



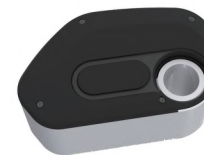
SSCB-024
CHAIN COVER / 链盖



SSEA-002
CONTROLLER CASE / 控制器盒
50*80*120



SSEA-001
CONTROLLER CASE / 控制器盒
22*55*150



SSE-A85
MID MOTOR
B.B PART / 中置电机接线盒



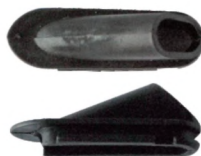
SSJ-020
WIRE BUCKLE / 线卡



SSJ-006
Φ2.0
WIRE SHEATH / 穿线盖



SSJ-007
Φ2.5
WIRE SHEATH / 穿线盖



SSJ-020
Φ2.5/3.0
WIRE SHEATH / 穿线盖



SSP-046
3PIN 5A DISCHARGING
MALE&FEMALE PLUG / 插头插座



GOLD PLATE / 镀金
SSP-044
5PIN DISCHARGING
MALE&FEMALE PLUG / 插头插座



GOLD PLATE / 镀金
SSP-045
2PIN DISCHARGING
MALE&FEMALE PLUG / 插头插座



GOLD PLATE / 镀金
SSP-047
6PIN DISCHARGING
MALE&FEMALE PLUG / 插头插座



GOLD PLATE / 镀金
SSP-048
6PIN DISCHARGING
MALE&FEMALE PLUG / 插头插座

KUNSHAN SHANSHAN ELECTRONIC SCIENCE-TECHNOLOGY CO., LTD.

NO.338, WAPUHE ROAD,PENGLANG TOWN,KUNSHAN,
JIANGSU PROVINCE, 215333,CHINA

T +86(0)512 5703 0038

+86(0)512 5730 7400

F +86(0)512 5703 0138



ksssj.cn